

Server. Storage. Telecom Cooling Solution

*All products are RoHS compliant.



Table of Contents

DC Fan		
Size (mm)	Air Flow (CFM)	Page
36X36X28	18.1 ~ 22.8	p.01
38X38X28	11.3 ~ 24.2	p.03
40X40X28	12.8 ~ 31.5	p.09
40X40X56	26.9 ~ 31.7	p.15
60X60X38	54.1 ~ 75.2	p.19
60X60X56	58.5 ~ 72.9	p.23
60X60X76	58.7 ~ 73.2	p.25
80X80X38	105.8 ~ 141.9	p.27
80X80X80	122 ~ 151.5	p.31
92X92X38	138.1 ~ 182.4	p.33
140X140X38	238.5 ~ 297.9	p.35
140X140X51	250.3	p.39

DC Blower		
Size (mm)	Air Flow (CFM)	Page
97X95X33	44.2 ~ 54.7	p.41

36x36x28 mm

18.1~22.8 CFM



■ Specifications

Model	Bearing	Rating Voltage	Power Current	Power Consumption	Speed	Air Flow	Static Pressure	Noise	Weight	Curve
	2BALL Sleeve	(VDC)	(mA)	(WATTS)	(RPM)	(CFM)	(inch-H ₂ O)	(dB(A))	(g)	
PF36281BX-0000-A99	☉	12	800	9.60	23000	22.8	2.55	61.9	40.5	1
PF36281B1-0000-A99	☉	12	450	5.40	18400	18.1	1.62	55.7	40.5	2

■ Function

PF36281BX / 1

A99: AutoRestart

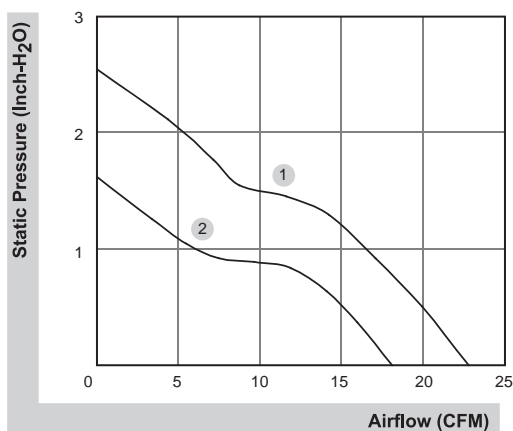
F99: AutoRestart and R type

G99: AutoRestart and F type

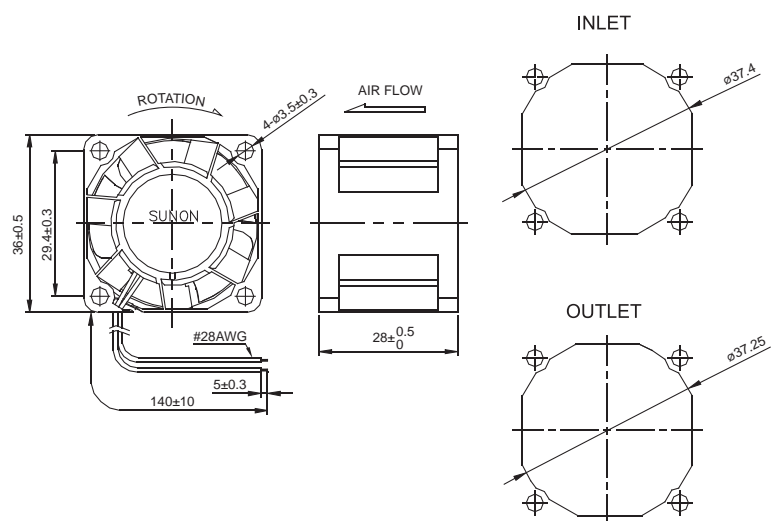
H99: AutoRestart and PWM

S99: AutoRestart , F type and with PWM

■ Air Flow-Static Pressure Characteristics



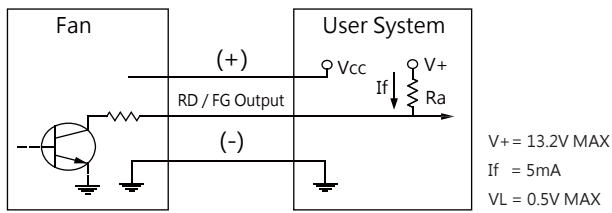
■ External dimensions(mm)



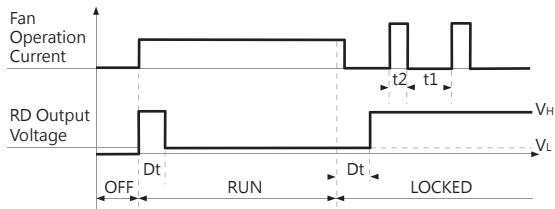
*All model could be customized. Please contact with Sunon Sales.

*Specifications are subject to change without notice. Please Visit SUNON website at www.sunon.com for update information.

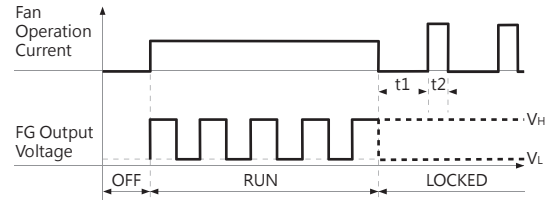
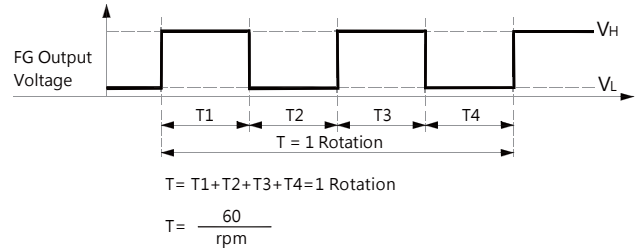
RD / FG Signal



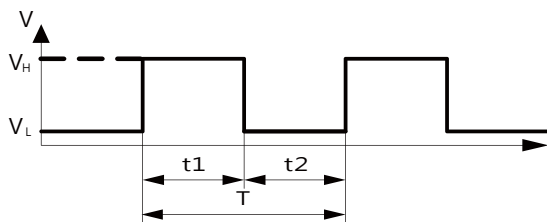
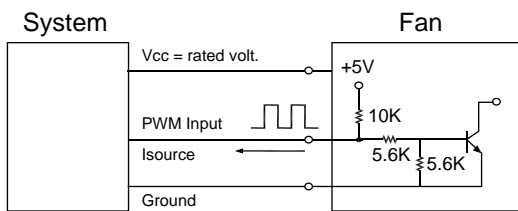
[RD Signal]



[FG Signal]



PWM Input Signal



1. Period : $T = \frac{1}{f_{\text{PWM}}} = t_1 + t_2 (\text{sec})$

2. Duty Cycle (D.C.) : $\frac{t_1}{t_1 + t_2} * 100 = \frac{t_1}{T} * 100(\%)$

VH = 2.3~5.5V

VL = 0~0.8V

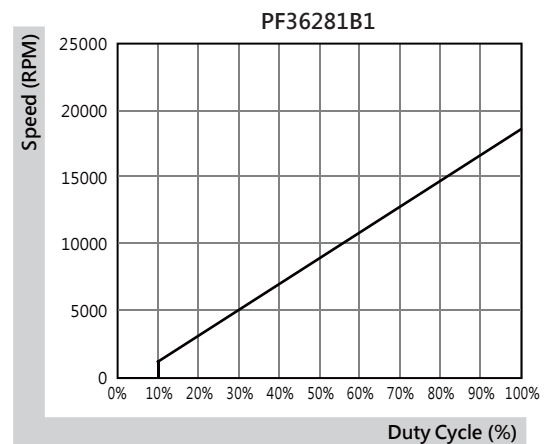
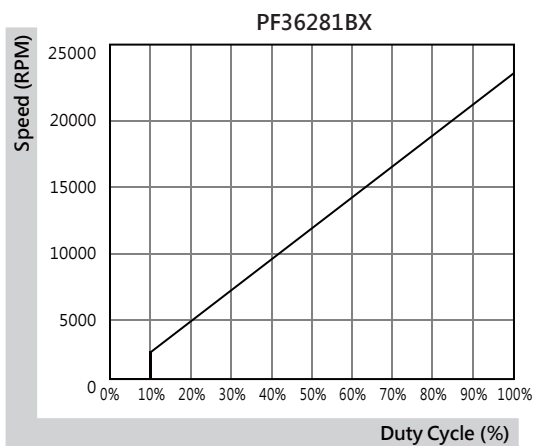
PWM FREQUENCY: 25KHZ

Isource = 0.5mA at PWM Input Voltage 0V

The speed is default to be maximum if PWM input pin is unconnected.

Min. start up duty cycle is 10%.

PWM Curve



*All model could be customized. Please contact with Sunon Sales.

*Specifications are subject to change without notice. Please Visit SUNON website at www.sunon.com for update information.

38x38x28 mm

18.9~24.2 CFM



■ Specifications

Model	Bearing	Rating Voltage	Power Current	Power Consumption	Speed	Air Flow	Static Pressure	Noise	Weight	Curve
	2BALL Sleeve	(VDC)	(mA)	(WATTS)	(RPM)	(CFM)	(inch-H ₂ O)	(dB(A))	(g)	
VF38281BX-0000-A9H	☉	12	870	10.44	27000	24.2	3.56	61.6	44.0	1
VF38281B1-0000-A9H	☉	12	475	5.70	21600	18.9	2.50	58.1	44.0	2

■ Function

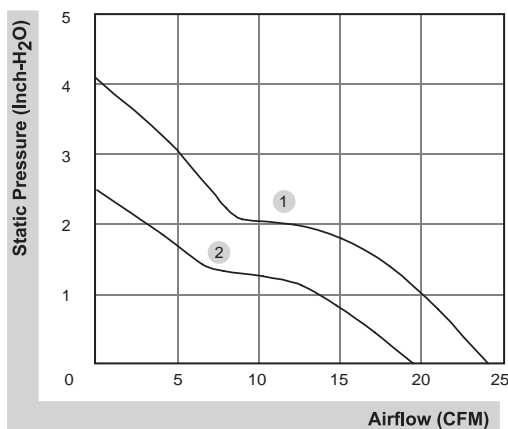
VF38281BX / 1

A9H: AutoRestart

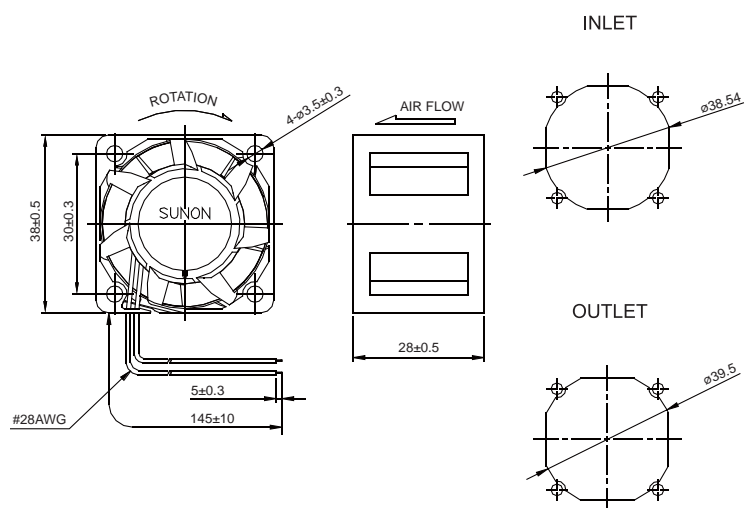
G9H: AutoRestart and F type

S9H: AutoRestart , F type and PWM

■ Air Flow-Static Pressure Characteristics



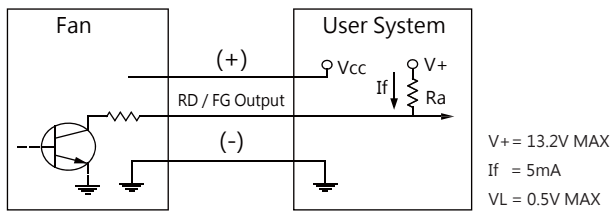
■ External dimensions(mm)



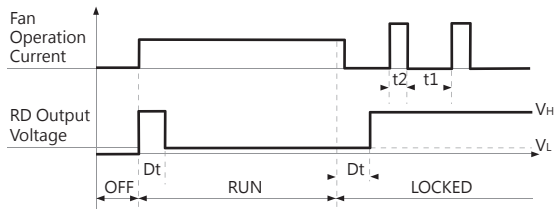
*All model could be customized. Please contact with Sunon Sales.

*Specifications are subject to change without notice. Please Visit SUNON website at www.sunon.com for update information.

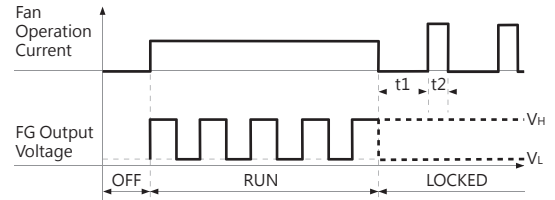
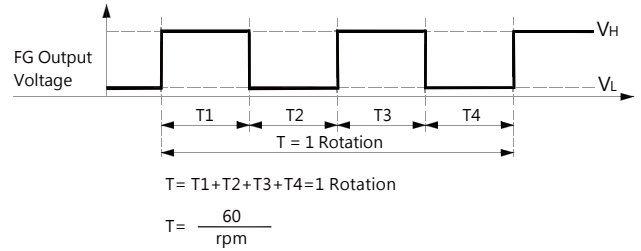
RD / FG Signal



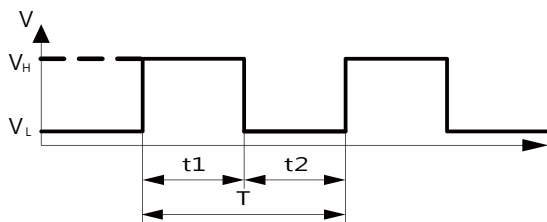
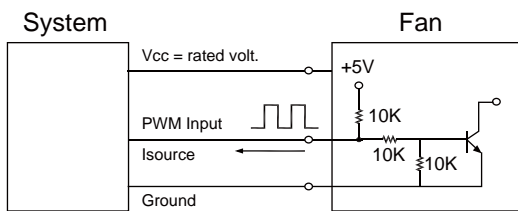
[RD Signal]



[FG Signal]



PWM Input Signal



1. Period : $T = \frac{1}{f_{\text{PWM}}} = t_1 + t_2(\text{sec})$

2. Duty Cycle (D.C.) : $\frac{t_1}{t_1 + t_2} * 100 = \frac{t_1}{T} * 100(\%)$

VH=2.3~5.5V

VL=0~0.8V

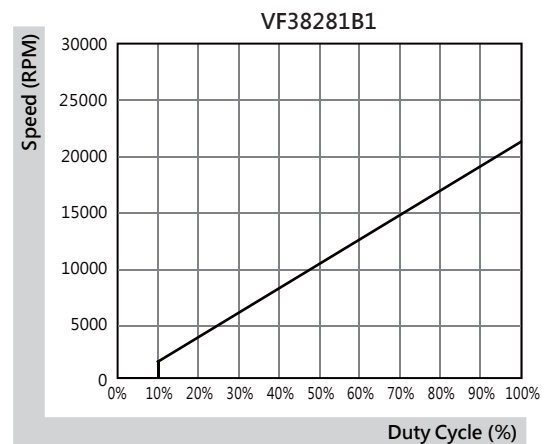
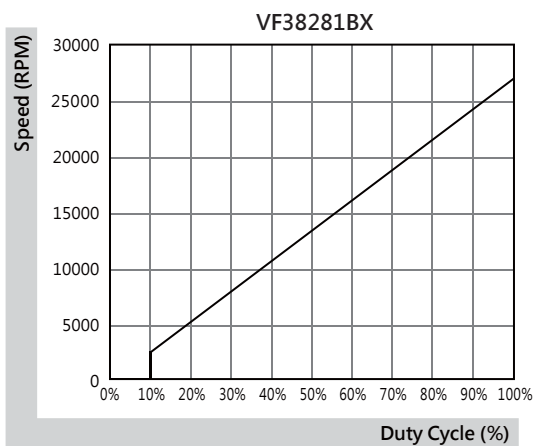
PWM FREQUENCY: 25KHZ

Isource=0.5mA at PWM Input Voltage 0V

The speed is default to be maximum if PWM input pin is unconnected.

Min. start up duty cycle is 10%.

PWM Curve

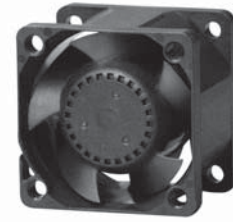


*All model could be customized. Please contact with Sunon Sales.


*Specifications are subject to change without notice. Please Visit SUNON website at www.sunon.com for update information.

38x38x28 mm

18.1 CFM



Specifications

	Bearing	Rating Voltage	Power Current	Power Consumption	Speed	Air Flow	Static Pressure	Noise	Weight	Curve
	● VAPO	(VDC)	(mA)	(WATTS)	(RPM)	(CFM)	(Inch-H ₂ O)	(dB(A))	(g)	
PF38281V1-0000-A99	●	12	574	6.89	16000	18.1	1.42	51.8	43.0	1

Function

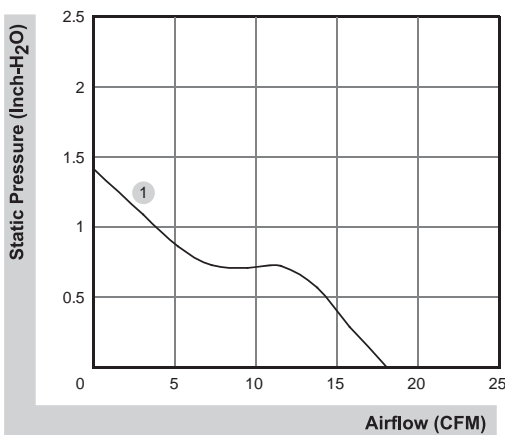
PF38281V1

A99: AutoRestart

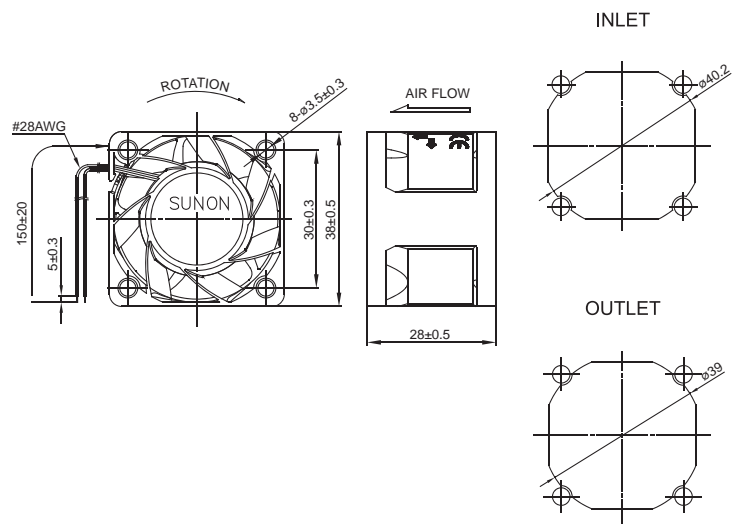
G99: AutoRestart and F type

S99: AutoRestart , F type and PWM

Air Flow-Static Pressure Characteristics



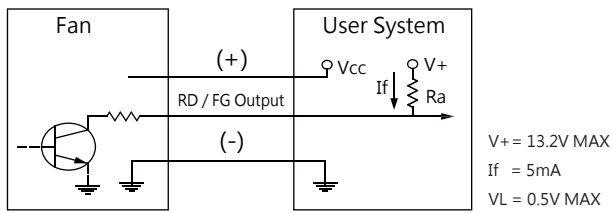
External dimensions(mm)



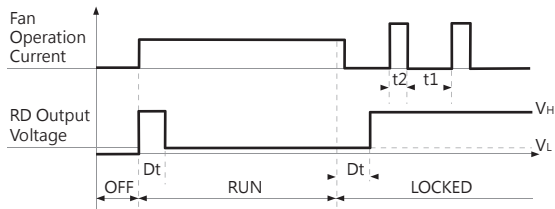
*All model could be customized. Please contact with Sunon Sales.

*Specifications are subject to change without notice. Please Visit SUNON website at www.sunon.com for update information.

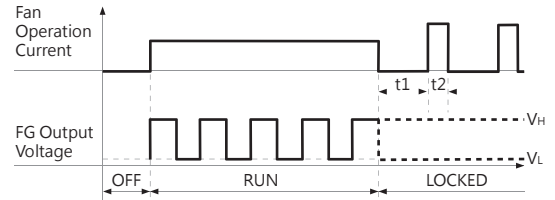
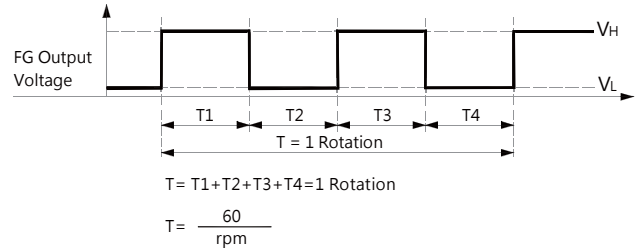
■ RD / FG Signal



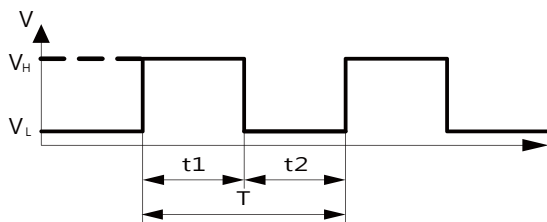
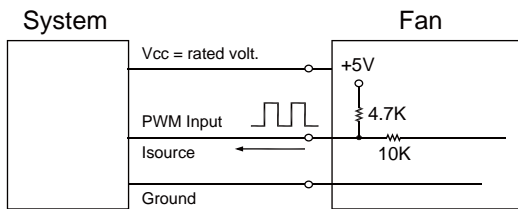
[RD Signal]



[FG Signal]



■ PWM Input Signal



1. Period :
$$T = \frac{1}{f_{PWM}} = t1 + t2(\text{sec})$$

2. Duty Cycle (D.C.) :
$$\frac{t1}{t1+t2} * 100 = \frac{t1}{T} * 100(\%)$$

VH=2.3~5.5V

VL=0~0.8V

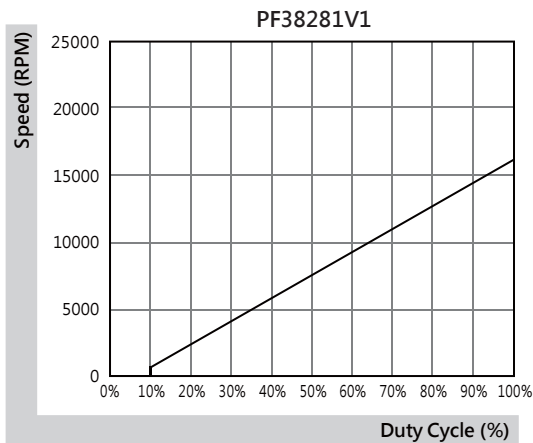
PWM FREQUENCY: 25KHZ

Isource=0.5mA at PWM Input Voltage 0V

The speed is default to be maximum if PWM input pin is unconnected.

Min. start up duty cycle is 10%.

■ PWM Curve

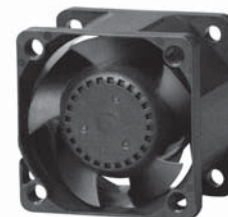


*All model could be customized. Please contact with Sunon Sales.

*Specifications are subject to change without notice. Please Visit SUNON website at www.sunon.com for update information.

38x38x28 mm

11.3~23.0 CFM



■ Specifications

Model	Bearing	Rating Voltage	Power Current	Power Consumption	Speed	Air Flow	Static Pressure	Noise	Weight	Curve
	2BALL Sleeve	(VDC)	(mA)	(WATTS)	(RPM)	(CFM)	(Inch-H ₂ O)	(dB(A))	(g)	
PF38281BX-0000-A99	☉	12	520	6.24	20000	23.0	2.23	57.0	41.0	1
PF38281B1-0000-A99	☉	12	315	3.78	16000	18.1	1.42	51.8	41.0	2
PF38281B2-0000-A99	☉	12	290	3.48	15000	16.9	1.26	51.0	40.0	3
PF38281B3-0000-A99	☉	12	194	2.33	13000	14.9	1.00	47.3	40.0	4
PF38281B4-0000-A99	☉	12	115	1.38	10000	11.3	0.60	40.8	40.0	5

■ Function

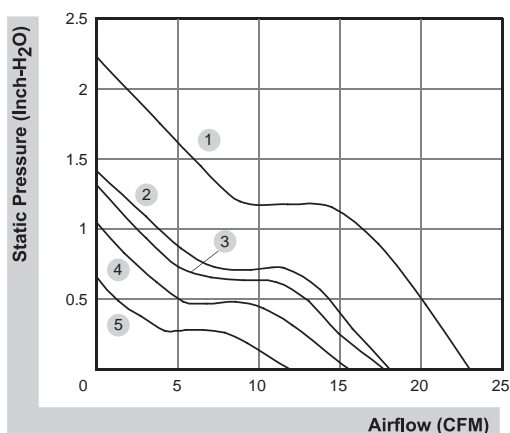
PF38281BX / 1

A99: AutoRestart
 F99: AutoRestart and R type
 G99: AutoRestart and F type
 H99: AutoRestart and PWM
 Q99: AutoRestart , R type and PWM
 S99: AutoRestart , F type and PWM

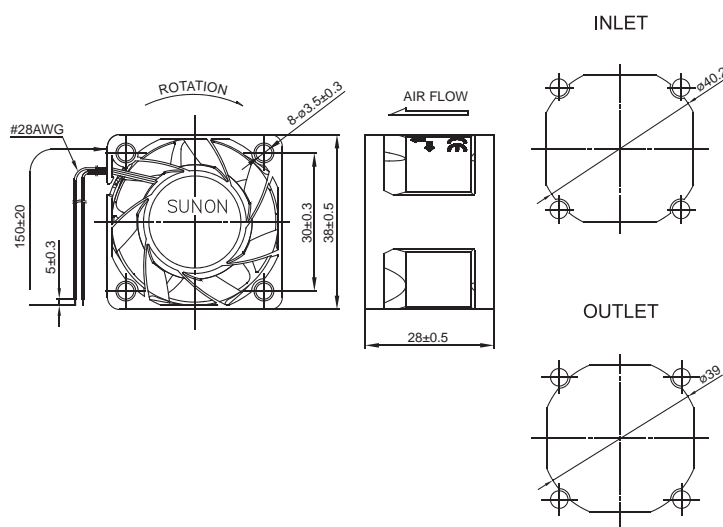
PF38281B2 / 3 / 4

A99: AutoRestart
 F99: AutoRestart and R type
 G99: AutoRestart and F type

■ Air Flow-Static Pressure Characteristics



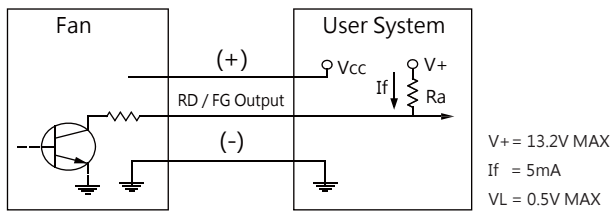
■ External dimensions(mm)



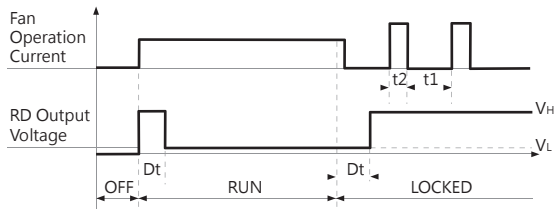
*All model could be customized. Please contact with Sunon Sales.

*Specifications are subject to change without notice. Please Visit SUNON website at www.sunon.com for update information.

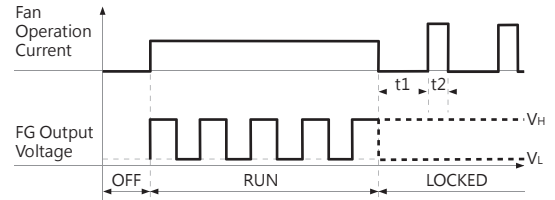
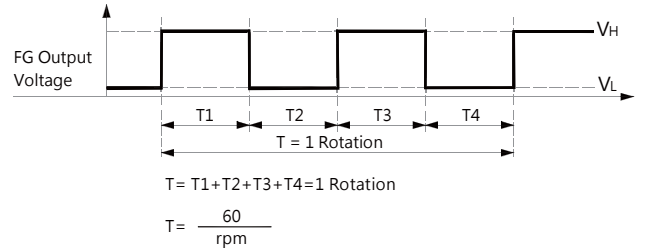
■ RD / FG Signal



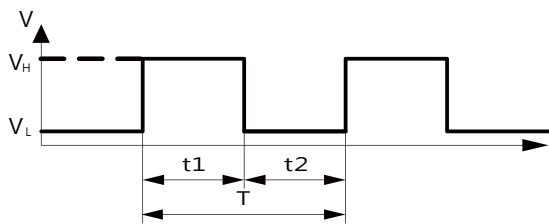
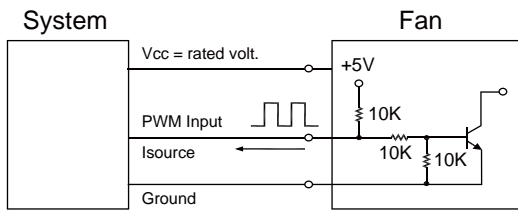
[RD Signal]



[FG Signal]



■ PWM Input Signal



1. Period :
$$T = \frac{1}{f_{PWM}} = t1 + t2(\text{sec})$$

2. Duty Cycle (D.C.) :
$$\frac{t1}{t1+t2} * 100 = \frac{t1}{T} * 100(\%)$$

VH=2.3~5.5V

VL=0~0.8V

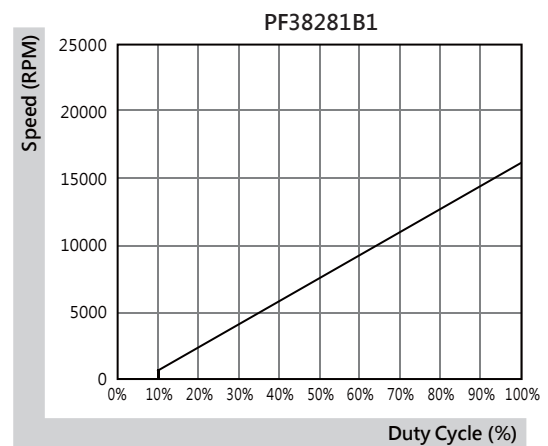
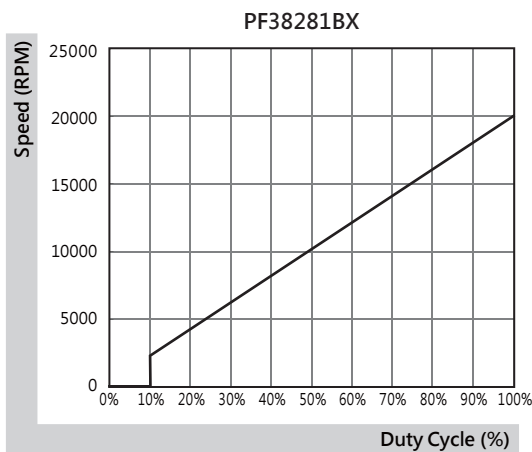
PWM FREQUENCY: 25KHZ

Isource=0.5mA at PWM Input Voltage 0V

The speed is default to be maximum if PWM input pin is unconnected.

Min. start up duty cycle is 10%.

■ PWM Curve



*All model could be customized. Please contact with Sunon Sales.

*Specifications are subject to change without notice. Please Visit SUNON website at www.sunon.com for update information.

40x40x28 mm

25.6~31.5 CFM



■ Specifications

Model	Bearing	Rating Voltage	Power Current	Power Consumption	Speed	Air Flow	Static Pressure	Noise	Weight	Curve
	2BALL Sleeve	(VDC)	(mA)	(WATTS)	(RPM)	(CFM)	(inch-H ₂ O)	(dB(A))	(g)	
VF40281BX-0000-A9H	☉	12	1140	13.68	27000	31.5	3.95	63.7	46.0	1
VF40281B1-0000-A9H	☉	12	630	7.56	21600	25.6	2.77	58.6	46.0	2

■ Function

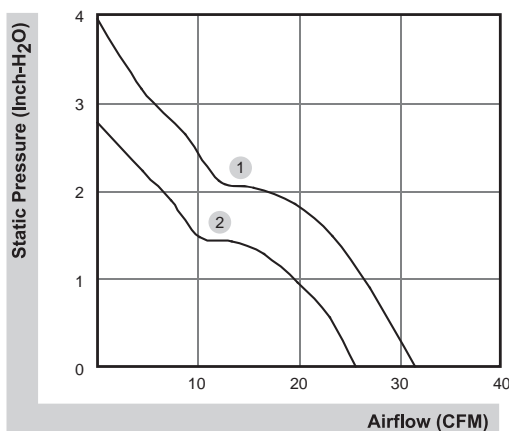
VF40281BX / 1

A9H: AutoRestart

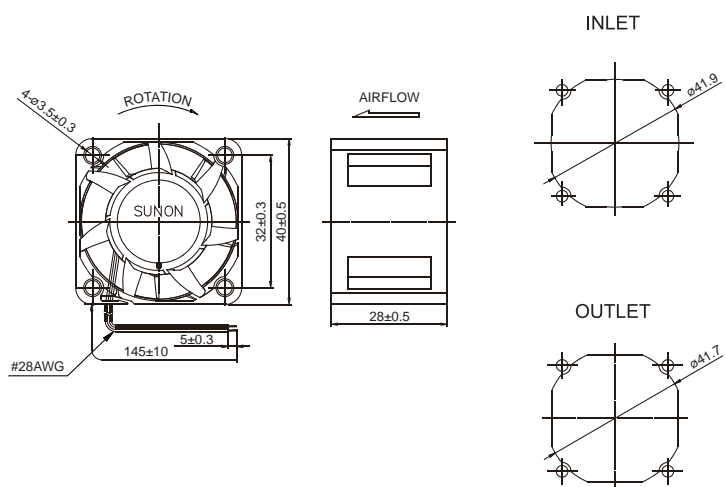
G9H: AutoRestart and F type

S9H: AutoRestart , F type and PWM

■ Air Flow-Static Pressure Characteristics



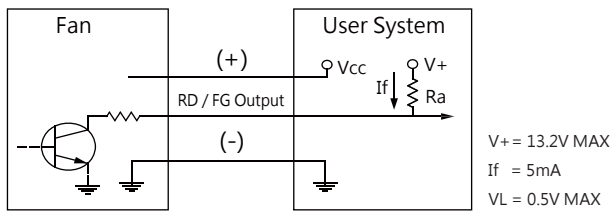
■ External dimensions(mm)



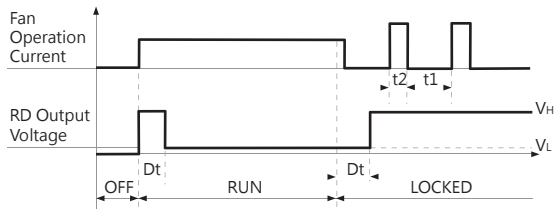
*All model could be customized. Please contact with Sunon Sales.

*Specifications are subject to change without notice. Please Visit SUNON website at www.sunon.com for update information.

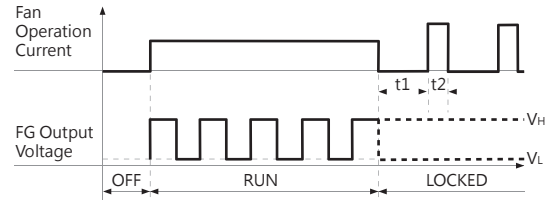
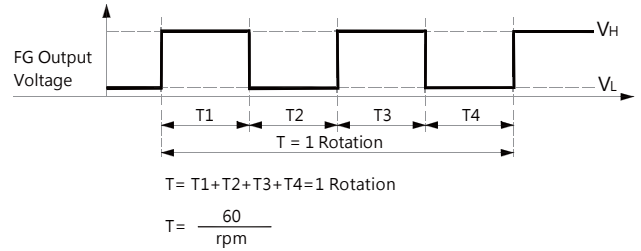
■ RD / FG Signal



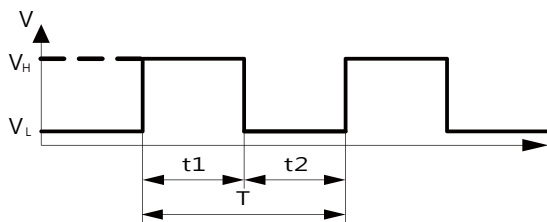
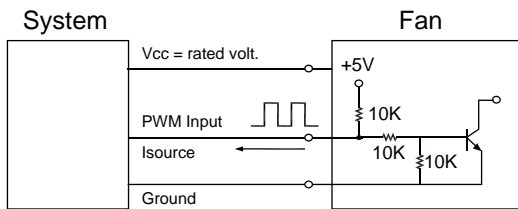
[RD Signal]



[FG Signal]



■ PWM Input Signal



1. Period :
$$T = \frac{1}{f_{PWM}} = t1 + t2(\text{sec})$$

2. Duty Cycle (D.C.) :
$$\frac{t1}{t1 + t2} * 100 = \frac{t1}{T} * 100(\%)$$

VH=2.3~5.5V

VL=0~0.8V

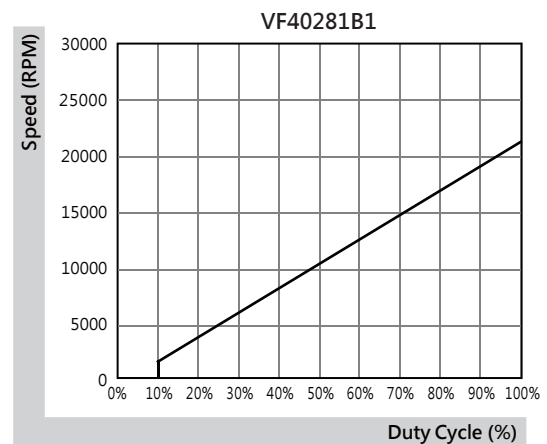
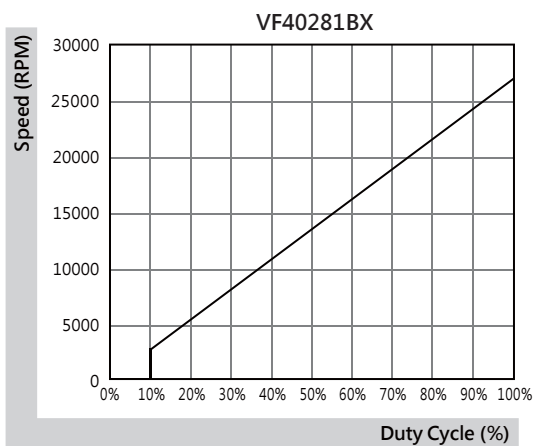
PWM FREQUENCY: 25KHZ

Isource=0.5mA at PWM Input Voltage 0V

The speed is default to be maximum if PWM input pin is unconnected.

Min. start up duty cycle is 10%.

■ PWM Curve



*All model could be customized. Please contact with Sunon Sales.


*Specifications are subject to change without notice. Please Visit SUNON website at www.sunon.com for update information.

40x40x28 mm

24.9 CFM



■ Specifications

	Bearing	Rating Voltage	Power Current	Power Consumption	Speed	Air Flow	Static Pressure	Noise	Weight	Curve
	VAPO	(VDC)	(mA)	(WATTS)	(RPM)	(CFM)	(Inch-H ₂ O)	(dB(A))	(g)	
PF40281V1-0000-A99	●	12	740	8.88	17600	24.9	1.95	56.0	45.0	1

■ Function

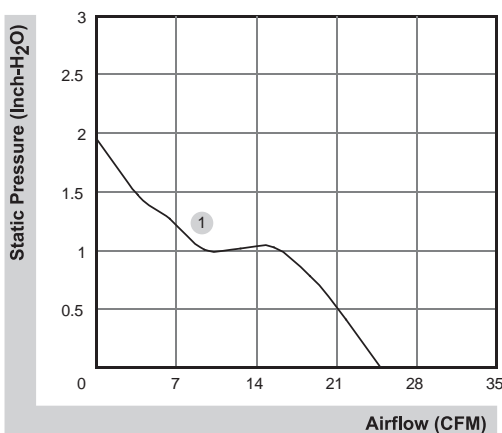
PF40281V1

A99: AutoRestart

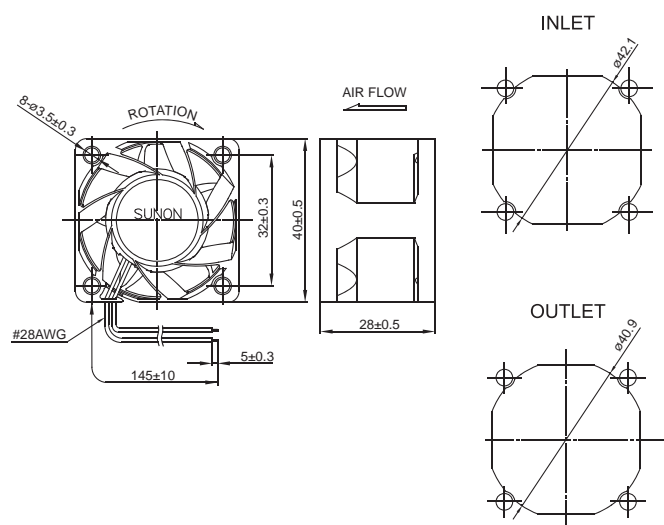
G99: AutoRestart and F type

S99: AutoRestart , F type and PWM

■ Air Flow-Static Pressure Characteristics



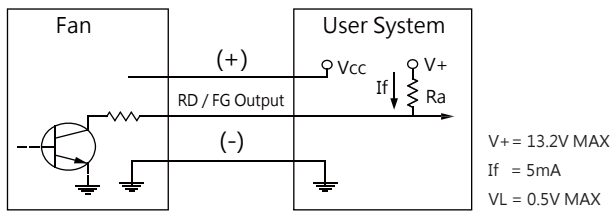
■ External dimensions(mm)



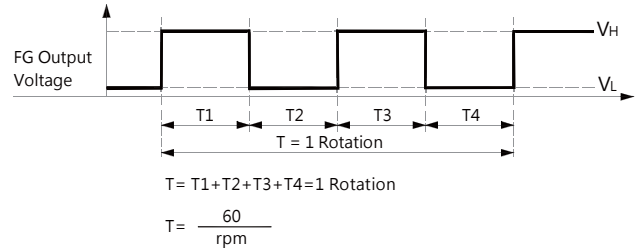
*All model could be customized. Please contact with Sunon Sales.

*Specifications are subject to change without notice. Please Visit SUNON website at www.sunon.com for update information.

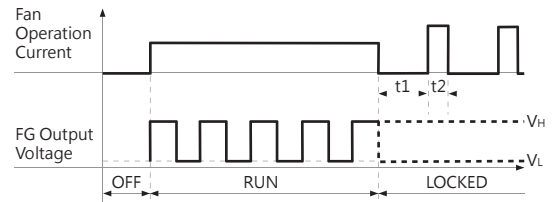
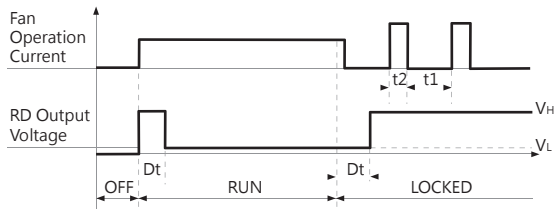
■ FG Signal



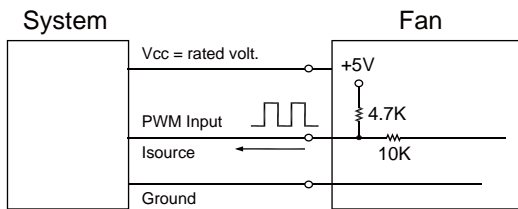
[FG Signal]



[RD Signal]

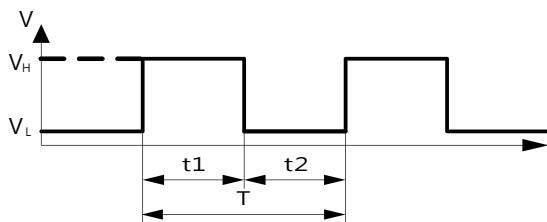


■ PWM Input Signal



1. Period : $T = \frac{1}{f_{\text{PWM}}} = t1 + t2(\text{sec})$

2. Duty Cycle (D.C.) : $\frac{t1}{t1+t2} * 100 = \frac{t1}{T} * 100(\%)$



VH=2.3~5.5V

VL=0~0.8V

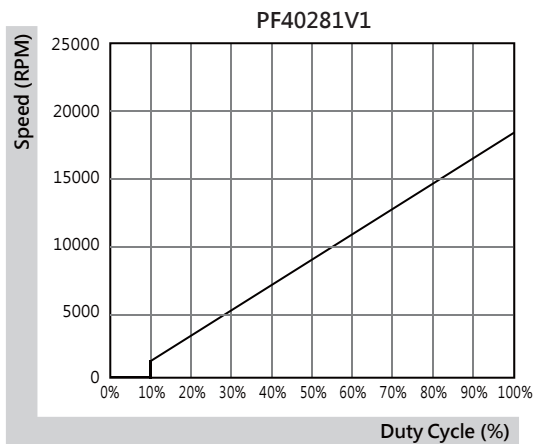
PWM FREQUENCY: 25KHZ

Isource=0.5mA at PWM Input Voltage 0V

The speed is default to be maximum if PWM input pin is unconnected.

Min. start up duty cycle is 10%.

■ PWM Curve



*All model could be customized. Please contact with Sunon Sales.

*Specifications are subject to change without notice. Please Visit SUNON website at www.sunon.com for update information.

40x40x28 mm

12.8~31.3 CFM



■ Specifications

Model	Bearing	Rating Voltage	Power Current	Power Consumption	Speed	Air Flow	Static Pressure	Noise	Weight	Curve
	2BALL Sleeve	(VDC)	(mA)	(WATTS)	(RPM)	(CFM)	(Inch-H ₂ O)	(dB(A))	(g)	
PF40281BX-0000-A99	☉	12	900	10.80	22000	31.3	2.81	62.0	42.0	1
PF40281B1-0000-A99	☉	12	510	6.12	17600	24.9	1.95	56.0	42.0	2
PF40281B2-0000-A99	☉	12	246	2.96	13000	18.0	1.10	48.7	45.0	3
PF40281B3-0000-A99	☉	12	162	1.95	11000	15.4	0.78	43.9	45.0	4
PF40281B4-0000-A99	☉	12	116	1.40	9200	12.8	0.54	39.9	45.0	5

■ Function

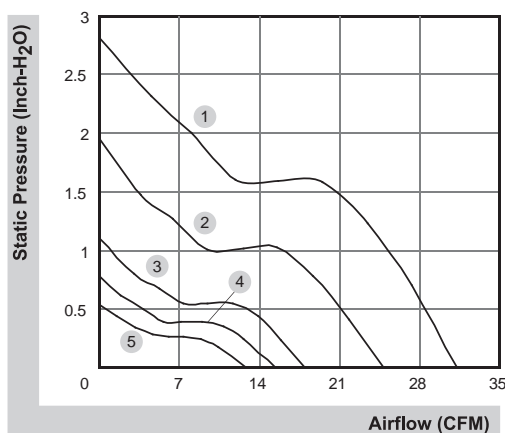
PF40281BX / 1

A99: AutoRestart
 F99: AutoRestart and R type
 G99: AutoRestart and F type
 H99: AutoRestart and PWM
 Q99: AutoRestart , R type and PWM
 S99: AutoRestart , F type and PWM

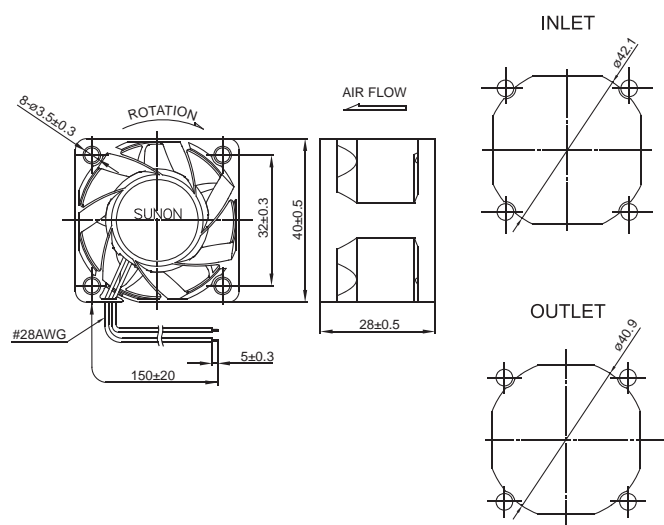
PF40281B2 / 3 / 4

A99: AutoRestart
 F99: AutoRestart and R type
 G99: AutoRestart and F type

■ Air Flow-Static Pressure Characteristics



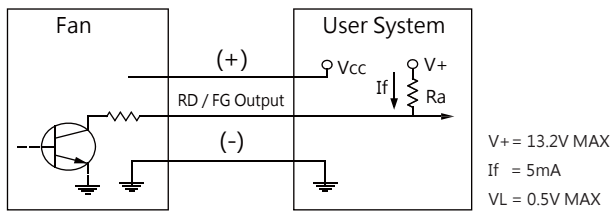
■ External dimensions(mm)



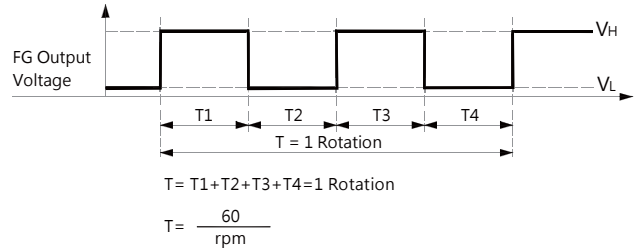
*All model could be customized. Please contact with Sunon Sales.

*Specifications are subject to change without notice. Please Visit SUNON website at www.sunon.com for update information.

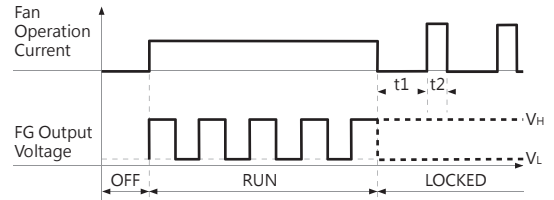
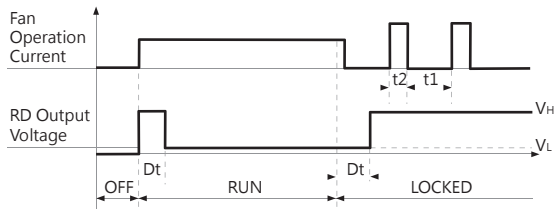
■ FG Signal



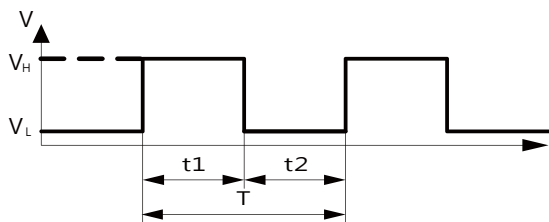
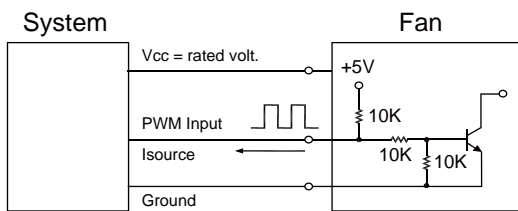
[FG Signal]



[RD Signal]



■ PWM Input Signal



1. Period :
$$T = \frac{1}{f_{PWM}} = t1 + t2(\text{sec})$$

2. Duty Cycle (D.C.) :
$$\frac{t1}{t1+t2} * 100 = \frac{t1}{T} * 100(\%)$$

VH=2.3~5.5V

VL=0~0.8V

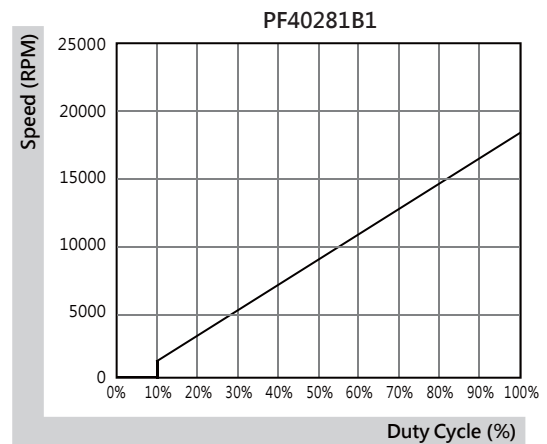
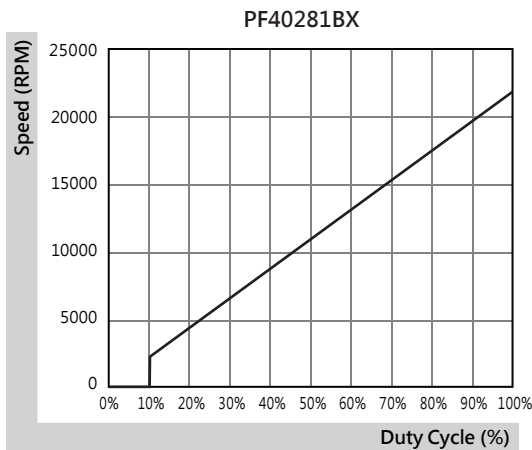
PWM FREQUENCY: 25KHZ

Isource=0.5mA at PWM Input Voltage 0V

The speed is default to be maximum if PWM input pin is unconnected.

Min. start up duty cycle is 10%.

■ PWM Curve

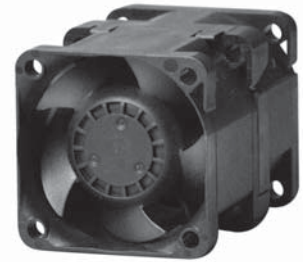


*All model could be customized. Please contact with Sunon Sales.

*Specifications are subject to change without notice. Please Visit SUNON website at www.sunon.com for update information.

40x40x56 mm

26.9~31.7 CFM



Specifications

Model	Bearing	Rating Voltage	Power Current	Power Consumption	Speed in / out	Air Flow	Static Pressure	Noise	Weight	Curve
	2BALL Sleeve	(VDC)	(mA)	(WATTS)	(RPM)	(CFM)	(Inch-H ₂ O)	(dB(A))	(g)	
PF40561BX-0000-A99	☉	12	1390	16.68	21500/18000	31.7	3.60	65.9	87.0	1
PF40561B1-0000-A99	☉	12	890	10.68	18000/15000	26.9	2.56	62.3	87.0	2

Function

PF40561BX / 1

A99: AutoRestart

F99: AutoRestart and R type

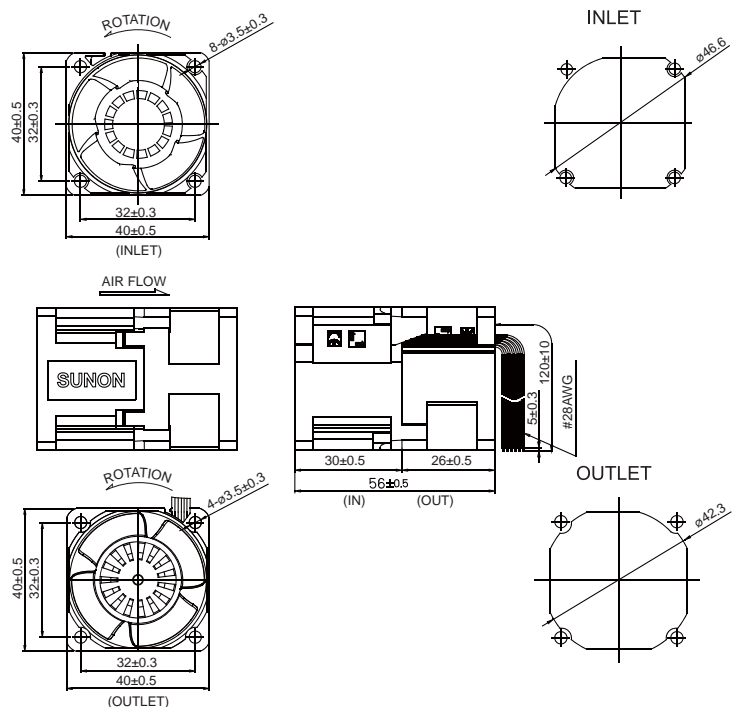
G99: AutoRestart and F type

H99: AutoRestart and PWM

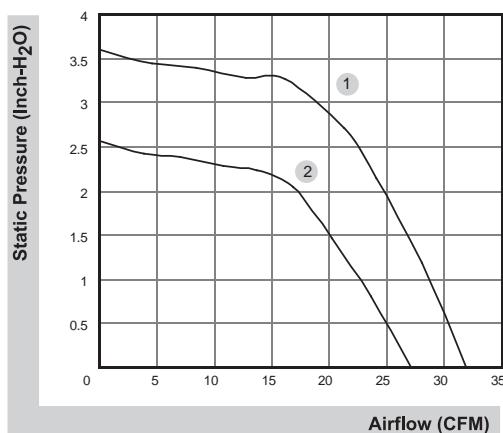
Q99: AutoRestart , R type and PWM

S99: AutoRestart , F type and PWM

External dimensions(mm)



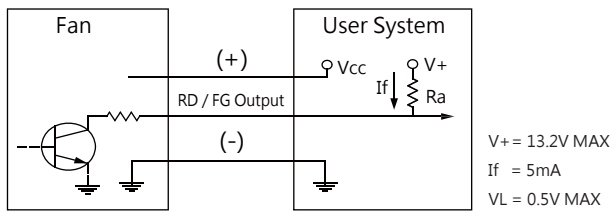
Air Flow-Static Pressure Characteristics



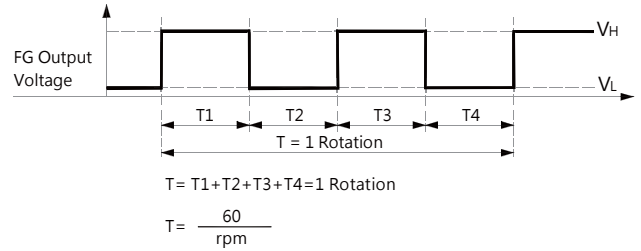
*All model could be customized. Please contact with Sunon Sales.

*Specifications are subject to change without notice. Please Visit SUNON website at www.sunon.com for update information.

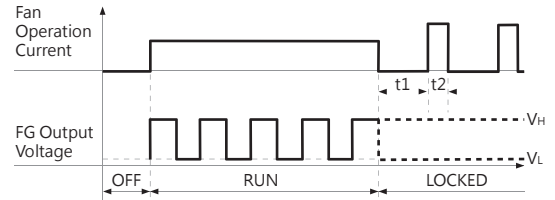
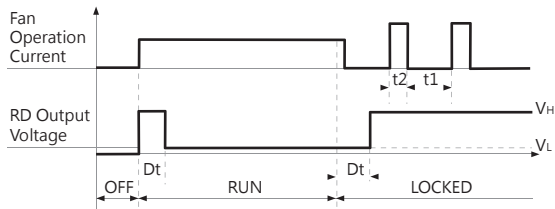
■ FG Signal



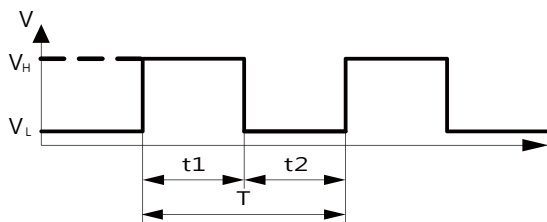
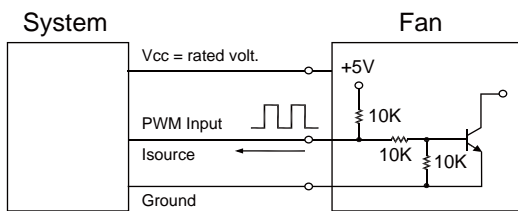
[FG Signal]



[RD Signal]



■ PWM Input Signal



1. Period : $T = \frac{1}{f_{PWM}} = t1 + t2(\text{sec})$

2. Duty Cycle (D.C.) : $\frac{t1}{t1+t2} * 100 = \frac{t1}{T} * 100(\%)$

VH=2.3~5.5V

VL=0~0.8V

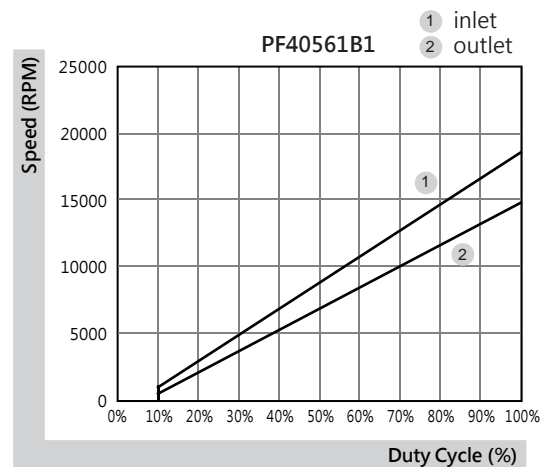
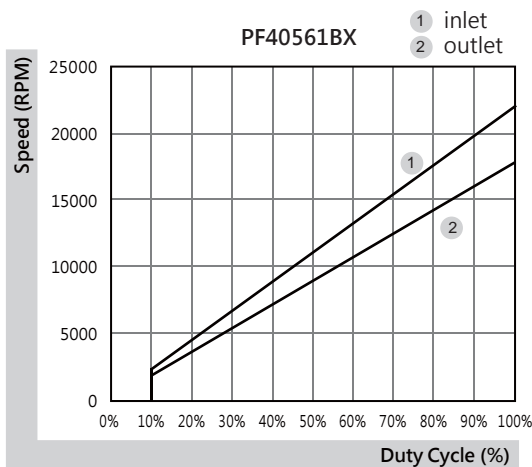
PWM FREQUENCY: 25KHZ

Isource=0.5mA at PWM Input Voltage 0V

The speed is default to be maximum if PWM input pin is unconnected.

Min. start up duty cycle is 10%.

■ PWM Curve



*All model could be customized. Please contact with Sunon Sales.

*Specifications are subject to change without notice. Please Visit SUNON website at www.sunon.com for update information.

40x40x56 mm

19.7~25.0 CFM



■ Specifications

Model	Bearing	Rating Voltage	Power Current	Power Consumption	Speed in / out	Air Flow	Static Pressure	Noise	Weight	Curve
	2BALL Sleeve	(VDC)	(mA)	(WATTS)	(RPM)	(CFM)	(inch-H ₂ O)	(dB(A))	(g)	
VG40561BX-0000-A9H	☉	12	1400	16.80	25500/22300	25.0	6.19	65.0	87.0	1
VG40561B1-0000-A9H	☉	12	750	9.00	20400/17800	19.7	4.16	62.5	87.0	2

■ Function

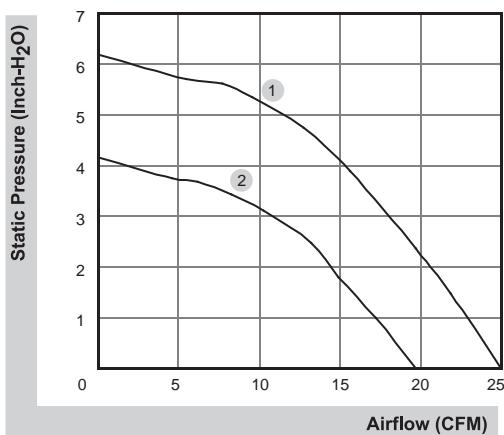
VG40561BX / 1

A9H: AutoRestart

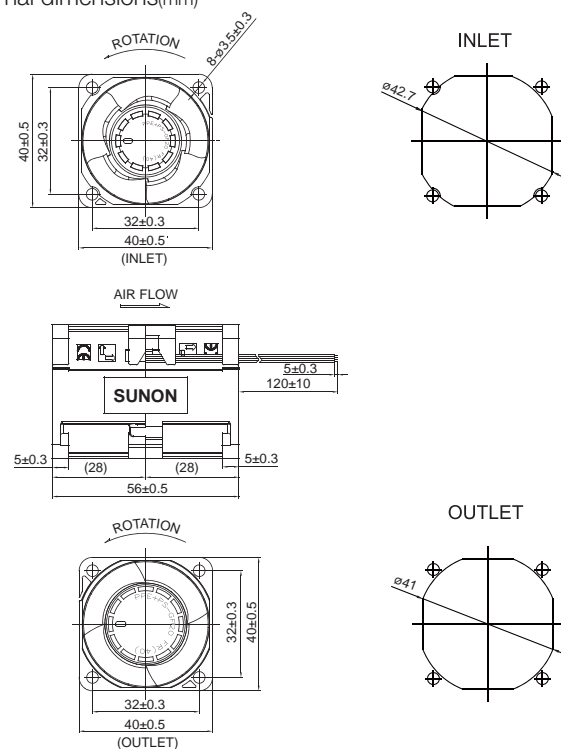
G9H: AutoRestart and F type

S9H: AutoRestart , F type and PWM

■ Air Flow-Static Pressure Characteristics



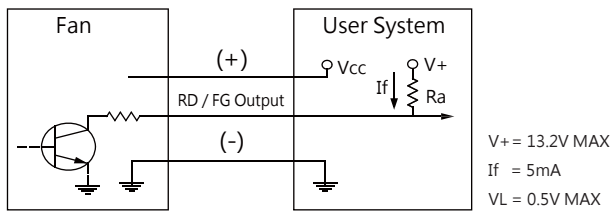
■ External dimensions(mm)



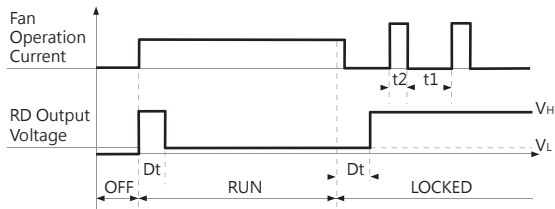
*All model could be customized. Please contact with Sunon Sales.

*Specifications are subject to change without notice. Please Visit SUNON website at www.sunon.com for update information.

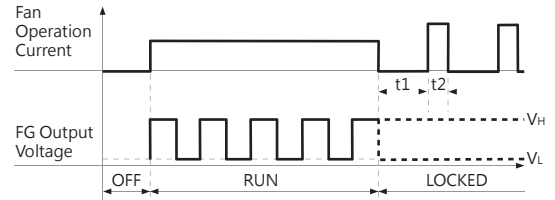
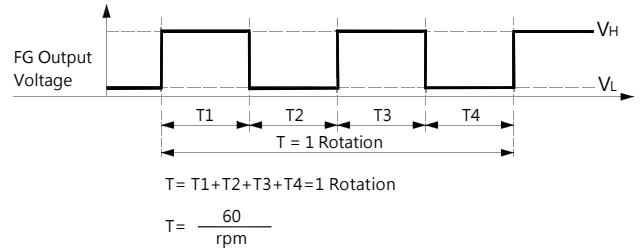
■ FG Signal



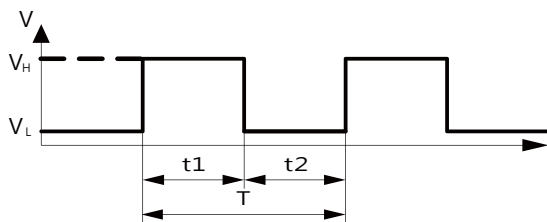
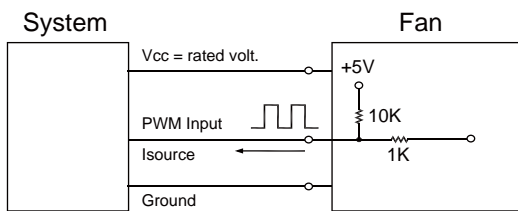
[RD Signal]



[FG Signal]



■ PWM Input Signal



1. Period :
$$T = \frac{1}{f_{\text{PWM}}} = t1 + t2(\text{sec})$$

2. Duty Cycle (D.C.) :
$$\frac{t1}{t1+t2} * 100 = \frac{t1}{T} * 100(\%)$$

VH=2.3~5.5V

VL=0~0.8V

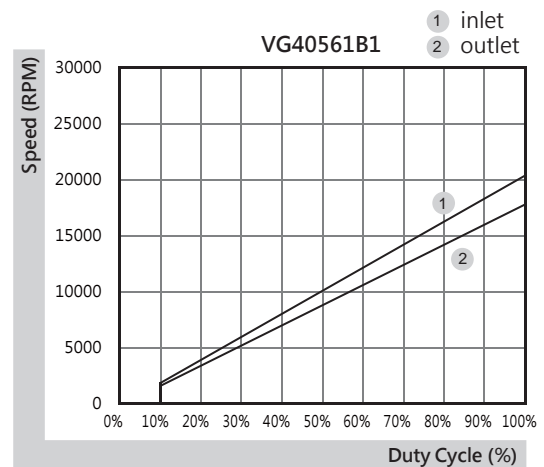
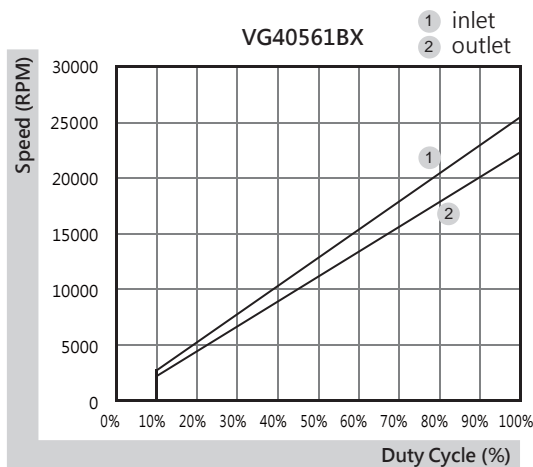
PWM FREQUENCY: 25KHZ

Isource=0.5mA at PWM Input Voltage 0V

The speed is default to be maximum if PWM input pin is unconnected.

Min. start up duty cycle is 10%.

■ PWM Curve



*All model could be customized. Please contact with Sunon Sales.

*Specifications are subject to change without notice. Please Visit SUNON website at www.sunon.com for update information.

60x60x38 mm

60.6~75.2 CFM



■ Specifications

Model	Bearing	Rating Voltage	Power Current	Power Consumption	Speed	Air Flow	Static Pressure	Noise	Weight	Curve
	2BALL Sleeve	(VDC)	(mA)	(WATTS)	(RPM)	(CFM)	(Inch-H ₂ O)	(dB(A))	(g)	
PF60381BX-0000-A99	☉	12	2500	30.00	16500	75.2	3.28	67.6	127.0	1
PF60381B1-0000-A99	☉	12	1200	14.40	13200	60.6	2.13	61.2	127.0	2

■ Function

PF60381BX / 1

A99: AutoRestart

F99: AutoRestart and R type

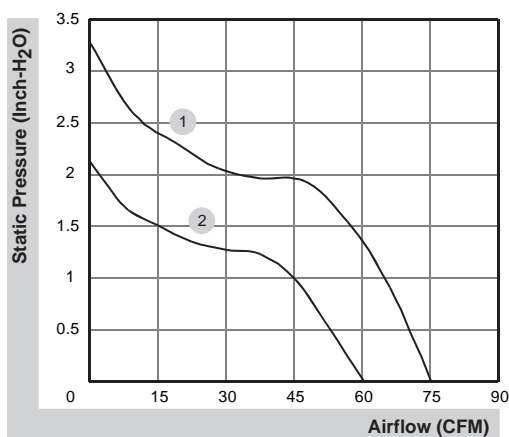
G99: AutoRestart and F type

H99: AutoRestart and PWM

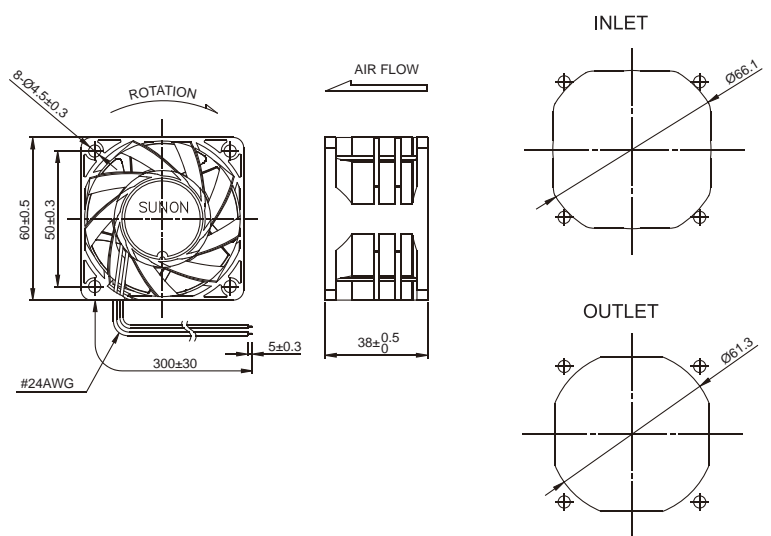
Q99: AutoRestart , R type and PWM

S99: AutoRestart , F type and PWM

■ Air Flow-Static Pressure Characteristics



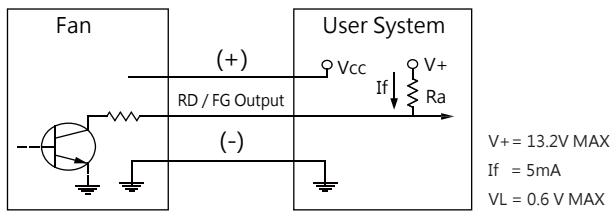
■ External dimensions(mm)



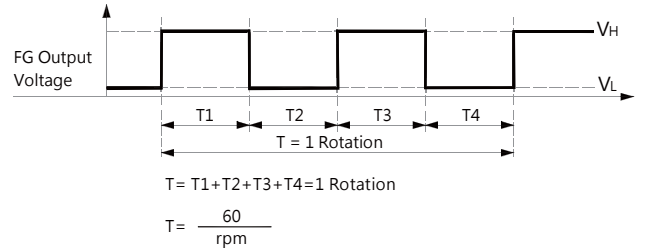
*All model could be customized. Please contact with Sunon Sales.

*Specifications are subject to change without notice. Please Visit SUNON website at www.sunon.com for update information.

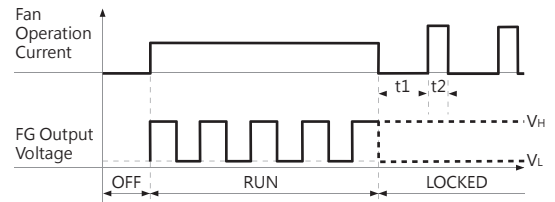
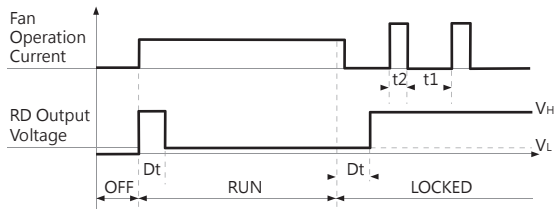
■ FG Signal



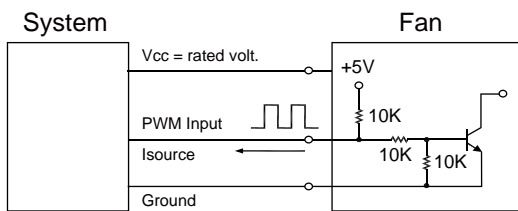
[FG Signal]



[RD Signal]

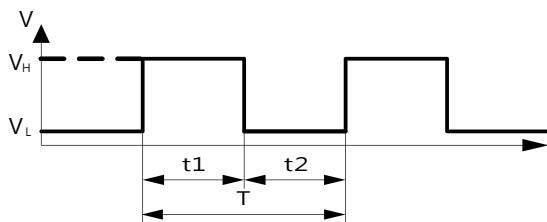


■ PWM Input Signal



1. Period : $T = \frac{1}{f_{\text{PWM}}} = t1 + t2(\text{sec})$

2. Duty Cycle (D.C.) : $\frac{t1}{t1 + t2} * 100 = \frac{t1}{T} * 100(\%)$



VH=2.3~5.5V

VL=0~0.8V

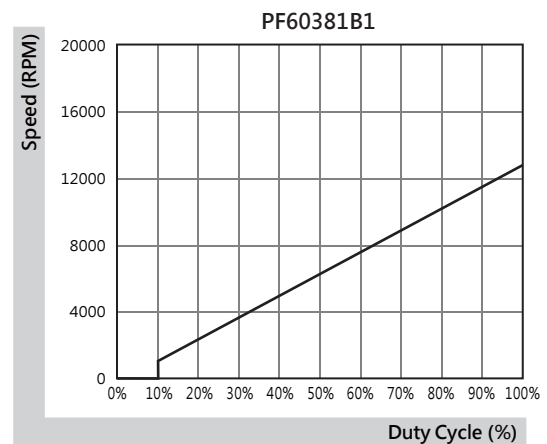
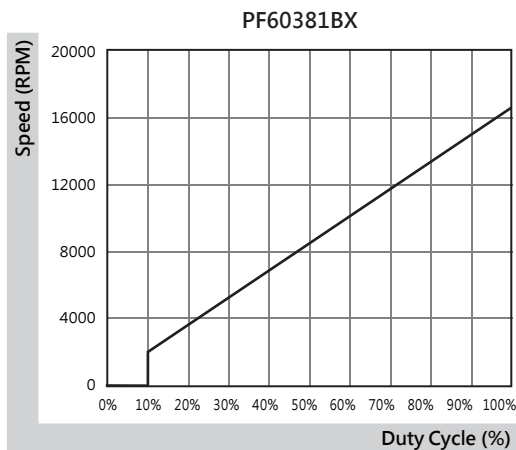
PWM FREQUENCY: 25KHZ

Isource=0.5mA at PWM Input Voltage 0V

The speed is default to be maximum if PWM input pin is unconnected.

Min. start up duty cycle is 10%.

■ PWM Curve



*All model could be customized. Please contact with Sunon Sales.

*Specifications are subject to change without notice. Please Visit SUNON website at www.sunon.com for update information.

60x60x38 mm

54.1~67.8 CFM



■ Specifications

Model	Bearing	Rating Voltage	Power Current	Power Consumption	Speed	Air Flow	Static Pressure	Noise	Weight	Curve
	2BALL Sleeve	(VDC)	(mA)	(WATTS)	(RPM)	(CFM)	(inch-H ₂ O)	(dB(A))	(g)	
VF60381BX-0000-A9H	☉	12	1900	22.80	22800	67.8	4.84	64.1	120.0	1
VF60381B1-0000-A9H	☉	12	1000	12.00	18300	54.1	4.23	60.9	120.0	2

■ Function

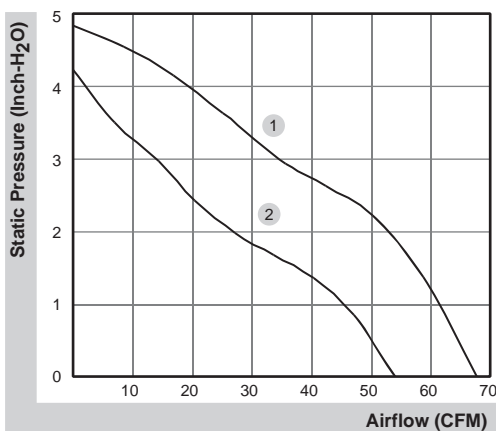
VF60381BX / 1

A9H: AutoRestart

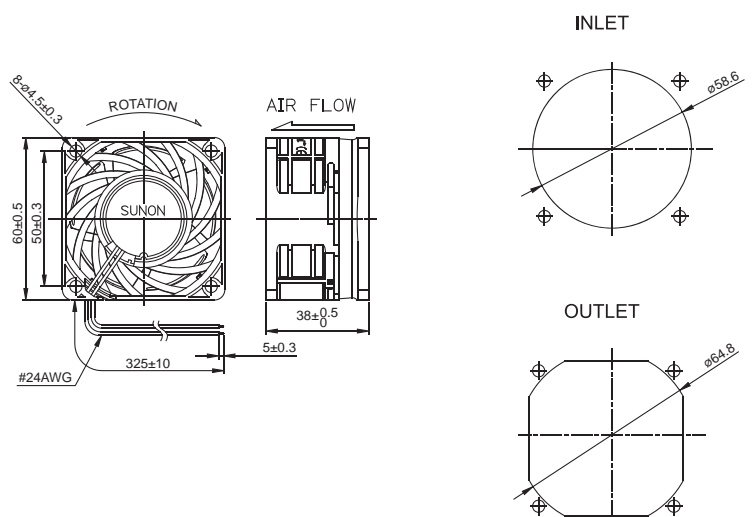
G9H: AutoRestart and F type

S9H: AutoRestart , F type and PWM

■ Air Flow-Static Pressure Characteristics



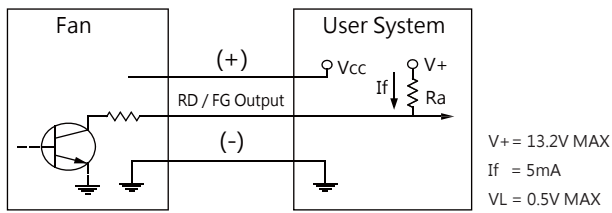
■ External dimensions(mm)



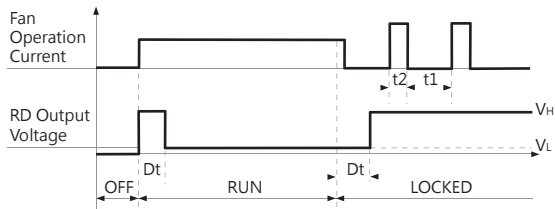
*All model could be customized. Please contact with Sunon Sales.

*Specifications are subject to change without notice. Please Visit SUNON website at www.sunon.com for update information.

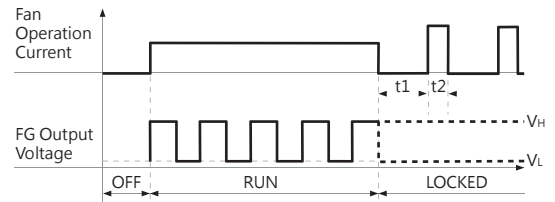
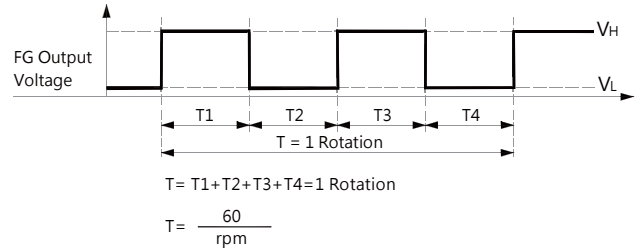
■ RD / FG Signal



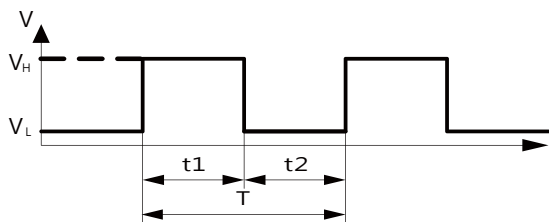
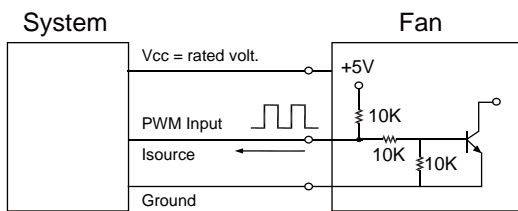
[RD Signal]



[FG Signal]



■ PWM Input Signal



1. Period : $T = \frac{1}{f_{PWM}} = t1 + t2(\text{sec})$

2. Duty Cycle (D.C.) : $\frac{t1}{t1+t2} * 100 = \frac{t1}{T} * 100(\%)$

VH=2.3~5.5V

VL=0~0.8V

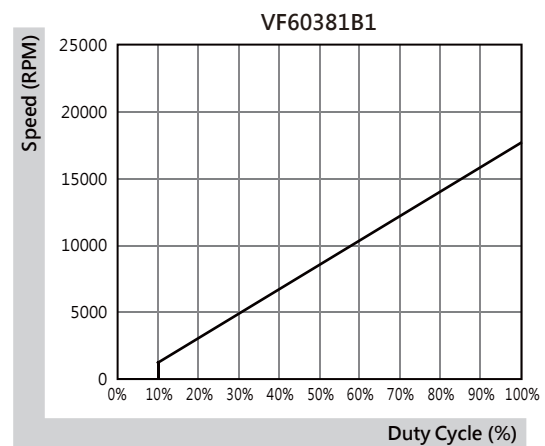
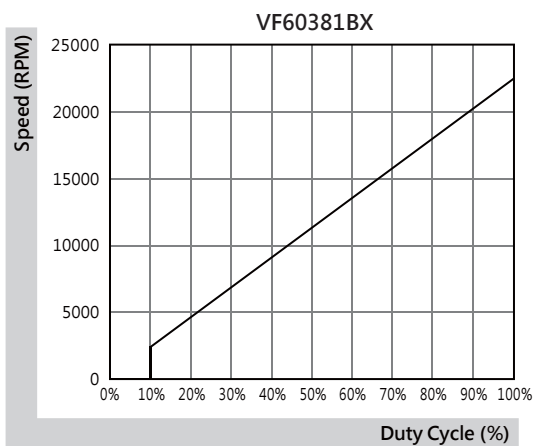
PWM FREQUENCY: 25KHZ

Isource=0.5mA at PWM Input Voltage 0V

The speed is default to be maximum if PWM input pin is unconnected.

Min. start up duty cycle is 10%.

■ PWM Curve

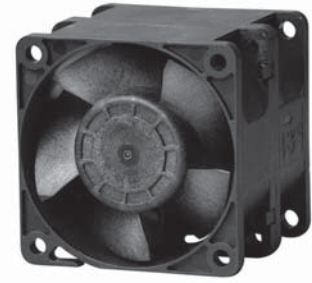


*All model could be customized. Please contact with Sunon Sales.

*Specifications are subject to change without notice. Please Visit SUNON website at www.sunon.com for update information.

60x60x56 mm

58.5~72.9 CFM



Specifications

Model	Bearing	Rating Voltage	Power Current	Power Consumption	Speed in / out	Air Flow	Static Pressure	Noise	Weight	Curve
	2BALL Sleeve	(VDC)	(mA)	(WATTS)	(RPM)	(CFM)	(inch-H ₂ O)	(dB(A))	(g)	
PF60561BX-0000-A9H	☉	12	2500	30.00	15300/14300	72.9	3.44	71.7	172.0	1
PF60561B1-0000-A9H	☉	12	1400	16.80	12300/11500	58.5	2.35	67.0	172.0	2

Function

PF60561BX / 1

A9H: AutoRestart

F9H: AutoRestart and R type

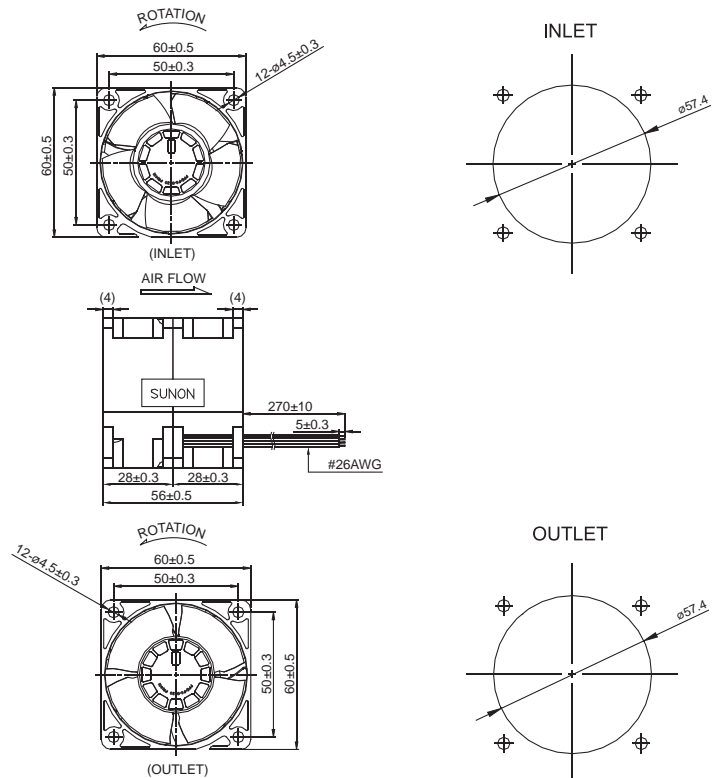
G9H: AutoRestart and F type

H9H: AutoRestart and PWM

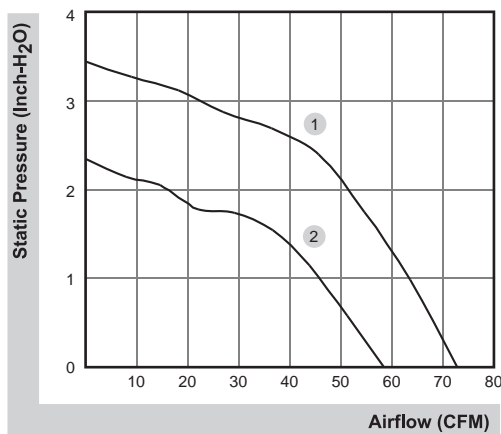
Q9H: AutoRestart , R type and PWM

S9H: AutoRestart , F type and PWM

External dimensions(mm)



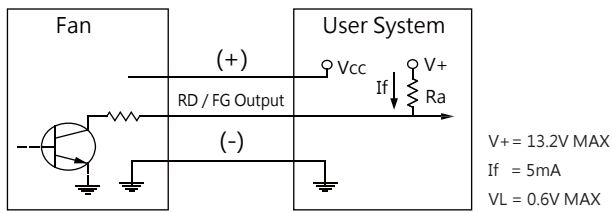
Air Flow-Static Pressure Characteristics



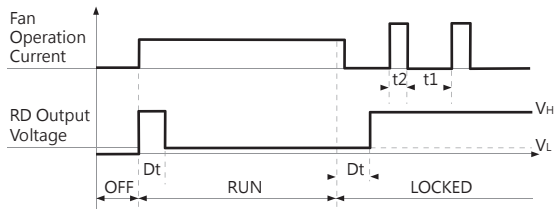
*All model could be customized. Please contact with Sunon Sales.

*Specifications are subject to change without notice. Please Visit SUNON website at www.sunon.com for update information.

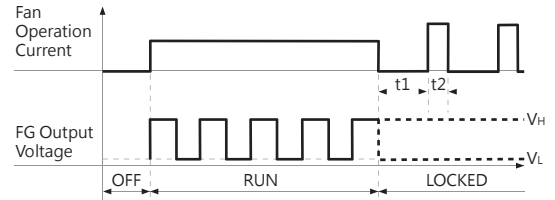
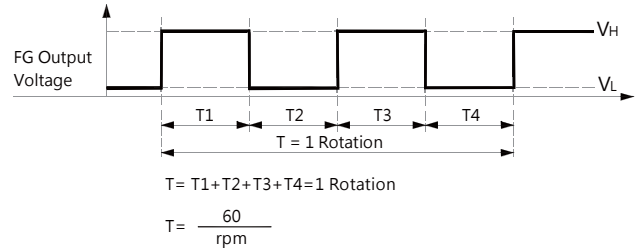
RD / FG Signal



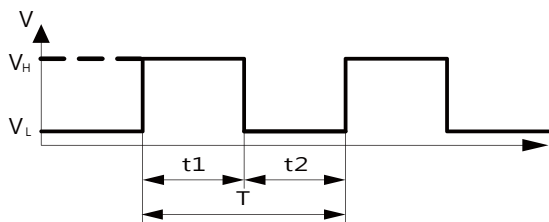
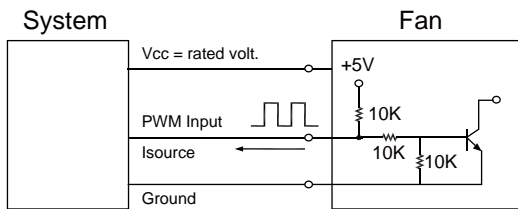
[RD Signal]



[FG Signal]



PWM Input Signal



1. Period :
$$T = \frac{1}{f_{PWM}} = t1 + t2(\text{sec})$$

2. Duty Cycle (D.C.) :
$$\frac{t1}{t1+t2} * 100 = \frac{t1}{T} * 100(\%)$$

VH=2.3~5.5V

VL=0~0.8V

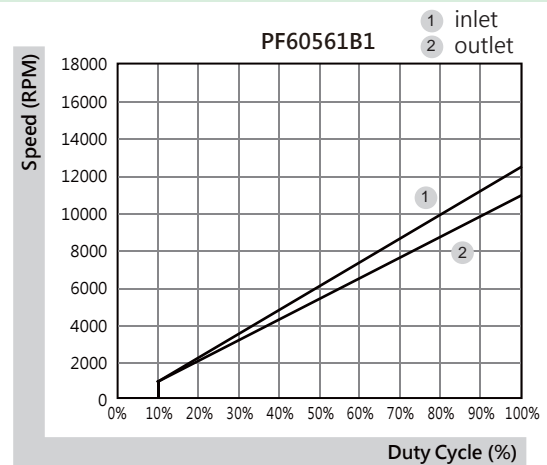
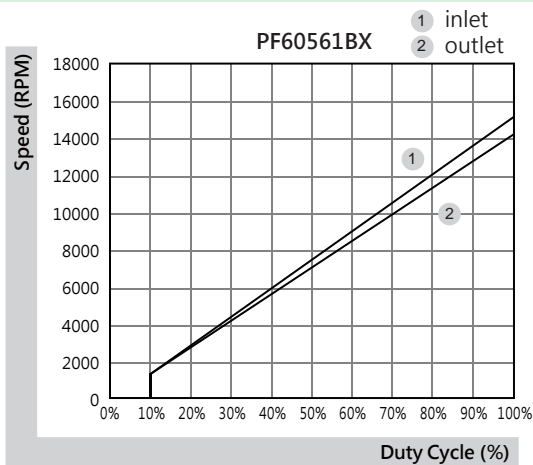
PWM FREQUENCY: 25KHZ

Isource=0.5mA at PWM Input Voltage 0V

The speed is default to be maximum if PWM input pin is unconnected.

Min. start up duty cycle is 10%.

PWM Curve



*All model could be customized. Please contact with Sunon Sales.

*Specifications are subject to change without notice. Please Visit SUNON website at www.sunon.com for update information.

60x60x76 mm

58.7~73.2 CFM



■ Specifications

Model	Bearing	Rating Voltage	Power Current	Power Consumption	Speed in / out	Air Flow	Static Pressure	Noise	Weight	Curve
	2BALL Sleeve	(VDC)	(mA)	(WATTS)	(RPM)	(CFM)	(inch-H ₂ O)	(dB(A))	(g)	
PF60761BX-0000-A99	☉	12	2800	33.60	18200/14700	73.2	3.96	68.6	270.0	1
PF60761B1-0000-A99	☉	12	1600	19.20	14600/11700	58.7	2.54	62.8	270.0	2

■ Function

PF60761BX / 1

A99: AutoRestart

F99: AutoRestart and R type

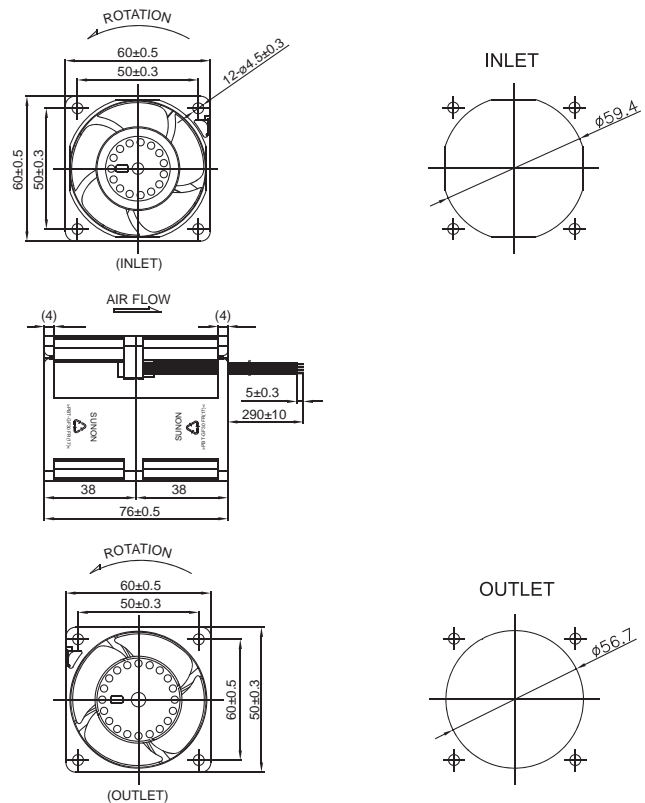
G99: AutoRestart and F type

H99: AutoRestart and PWM

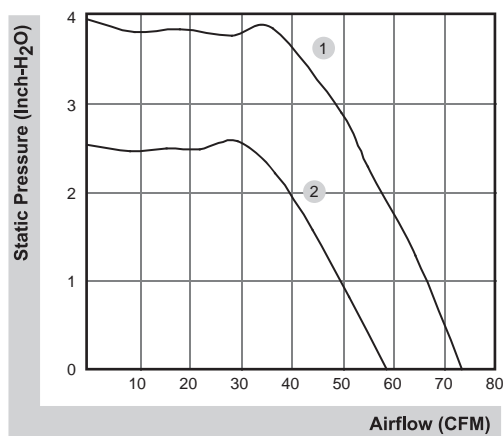
Q99: AutoRestart , R type and PWM

S99: AutoRestart , F type and PWM

■ External dimensions(mm)



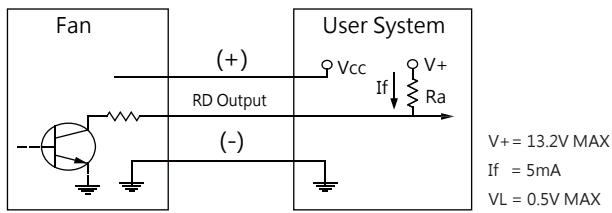
■ Air Flow-Static Pressure Characteristics



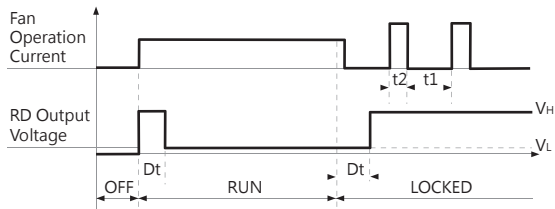
*All model could be customized. Please contact with Sunon Sales.

*Specifications are subject to change without notice. Please Visit SUNON website at www.sunon.com for update information.

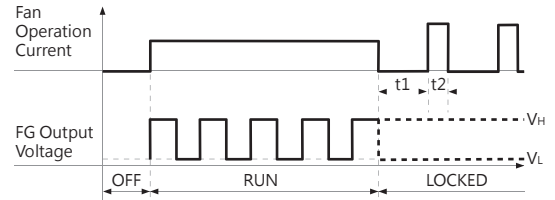
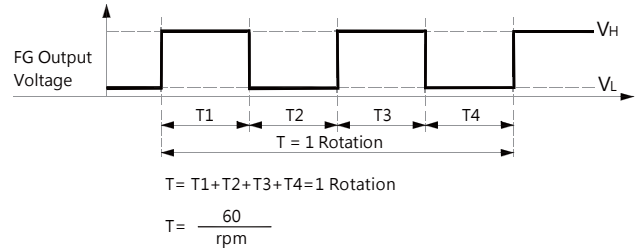
RD / FG Signal



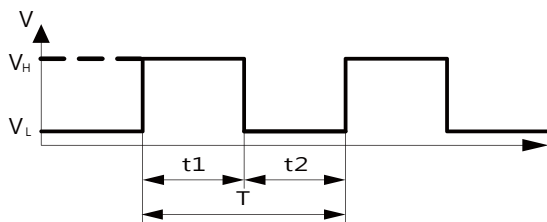
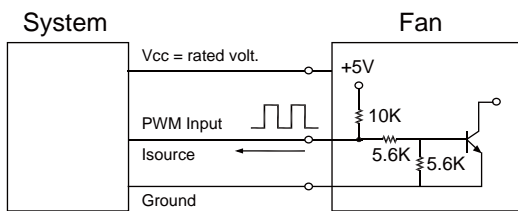
[RD Signal]



[FG Signal]



PWM Input Signal



1. Period :
$$T = \frac{1}{f_{PWM}} = t1 + t2(\text{sec})$$

2. Duty Cycle (D.C.) :
$$\frac{t1}{t1+t2} * 100 = \frac{t1}{T} * 100(\%)$$

VH=2.3~5.5V

VL=0~0.8V

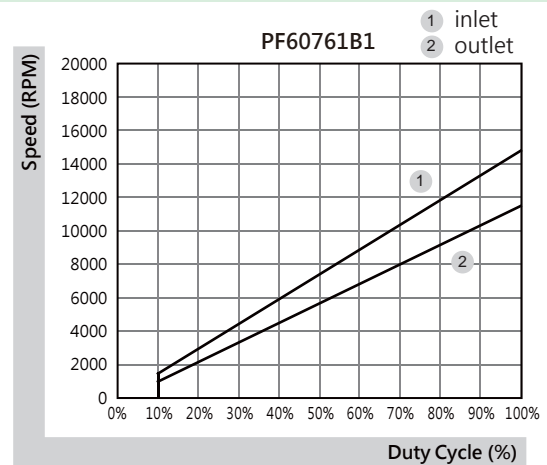
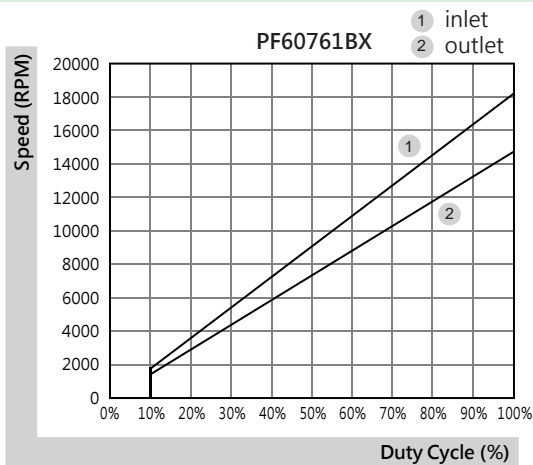
PWM FREQUENCY: 25KHZ

Isource=0.5mA at PWM Input Voltage 0V

The speed is default to be maximum if PWM input pin is unconnected.

Min. start up duty cycle is 10%.

PWM Curve

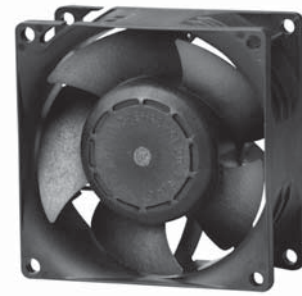


*All model could be customized. Please contact with Sunon Sales.

*Specifications are subject to change without notice. Please Visit SUNON website at www.sunon.com for update information.

80x80x38 mm

113.9~141.9 CFM



■ Specifications

Model	Bearing	Rating Voltage (VDC)	Power Current (mA)	Power Consumption (WATTS)	Speed (RPM)	Air Flow (CFM)	Static Pressure (inch-H ₂ O)	Noise (dB(A))	Weight (g)	Curve
PF80381BX-0000-A99	2BALL Sleeve	12	4000	48.00	14000	141.9	3.20	72.1	195.0	1
PF80381B1-0000-A99	2BALL Sleeve	12	2000	24.00	11200	113.9	2.23	64.8	195.0	2

■ Function

PF80381BX / 1

A99: AutoRestart

F99: AutoRestart and R type

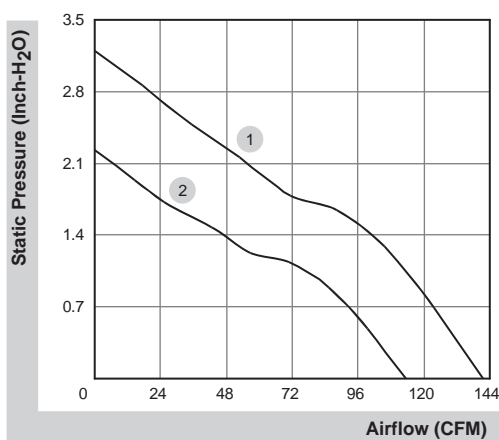
G99: AutoRestart and F type

H99: AutoRestart and PWM

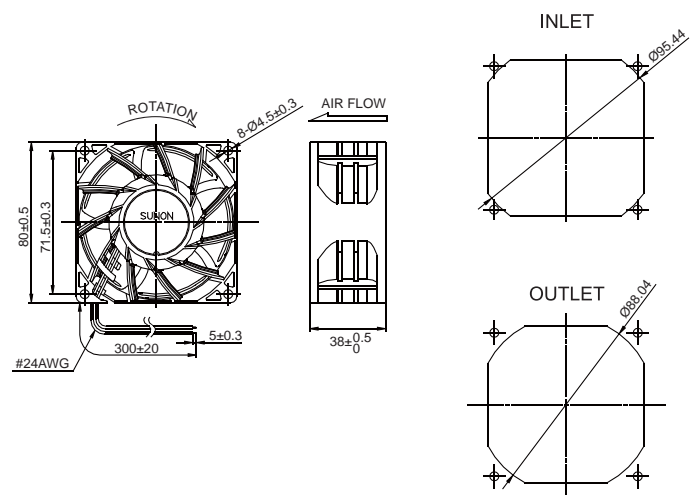
Q99: AutoRestart , R type and PWM

S99: AutoRestart , F type and PWM

■ Air Flow-Static Pressure Characteristics



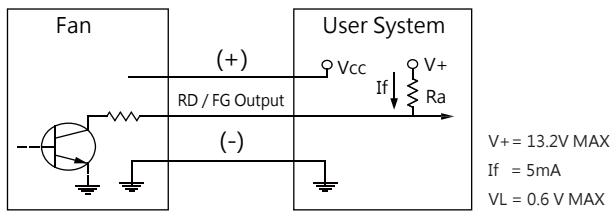
■ External dimensions(mm)



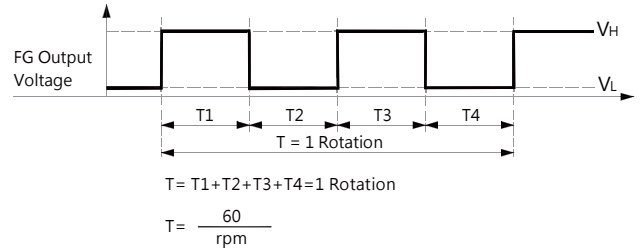
*All model could be customized. Please contact with Sunon Sales.

*Specifications are subject to change without notice. Please Visit SUNON website at www.sunon.com for update information.

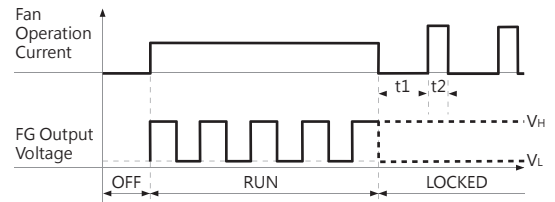
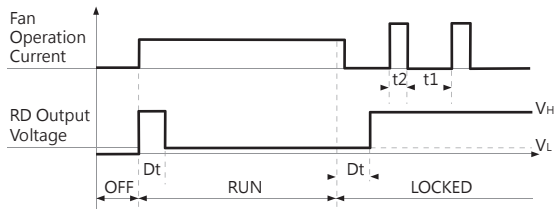
■ FG Signal



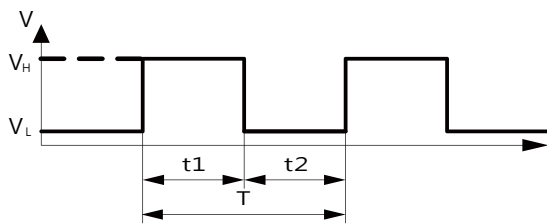
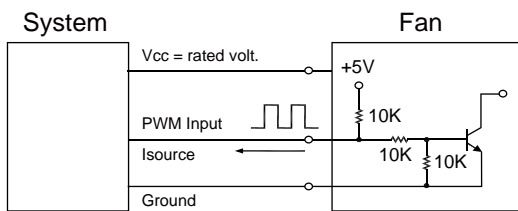
[FG Signal]



[RD Signal]



■ PWM Input Signal



1. Period : $T = \frac{1}{f_{PWM}} = t1 + t2(\text{sec})$

2. Duty Cycle (D.C.) : $\frac{t1}{t1+t2} * 100 = \frac{t1}{T} * 100(\%)$

VH=2.3~5.5V

VL=0~0.8V

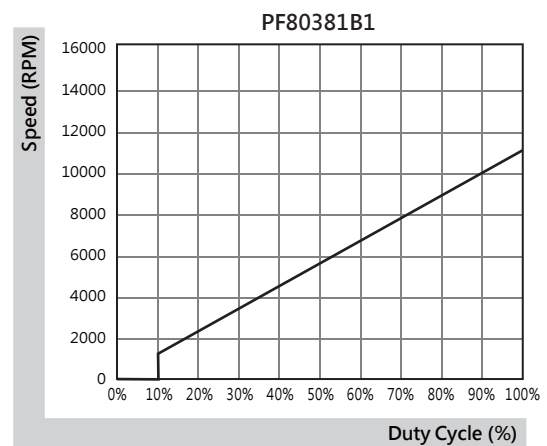
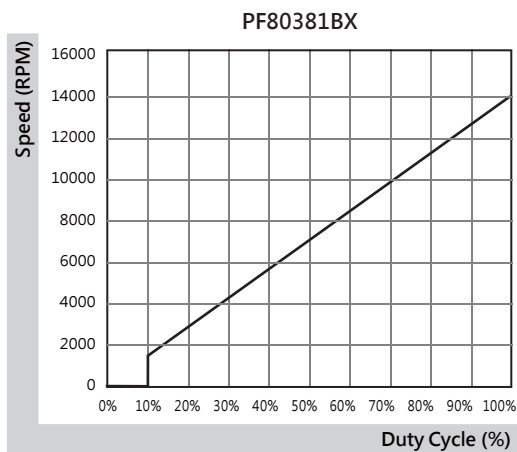
PWM FREQUENCY: 25KHZ

Isource=0.5mA at PWM Input Voltage 0V

The speed is default to be maximum if PWM input pin is unconnected.

Min. start up duty cycle is 10%.

■ PWM Curve

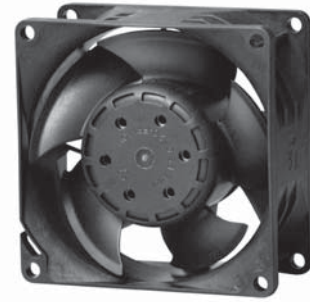


*All model could be customized. Please contact with Sunon Sales.

*Specifications are subject to change without notice. Please Visit SUNON website at www.sunon.com for update information.

80x80x38 mm

105.8~134.3 CFM



Specifications

Model	Bearing	Rating Voltage	Power Current	Power Consumption	Speed	Air Flow	Static Pressure	Noise	Weight	Curve
	2BALL Sleeve	(VDC)	(mA)	(WATTS)	(RPM)	(CFM)	(inch-H ₂ O)	(dB(A))	(g)	
PF80384BX-0000-A99	☉	48	700	33.60	12900	134.3	3.35	67.5	204.0	1
PF80384B1-0000-A99	☉	48	380	18.24	10500	105.8	2.46	62.6	204.0	2

Function

PF80384BX / 1

A99: AutoRestart

F99: AutoRestart and R type

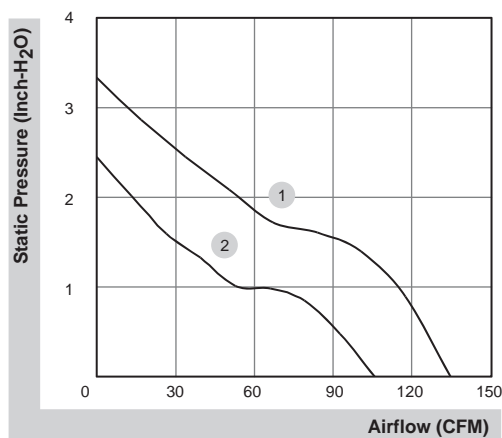
G99: AutoRestart and F type

H99: AutoRestart and PWM

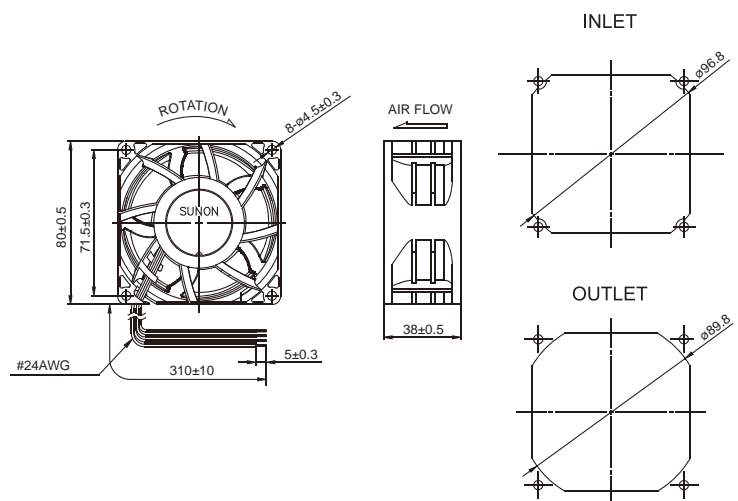
Q99: AutoRestart , R type and PWM

S99: AutoRestart , F type and PWM

Air Flow-Static Pressure Characteristics



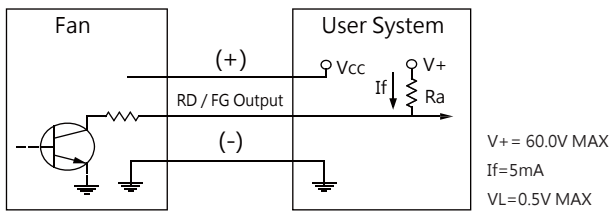
External dimensions(mm)



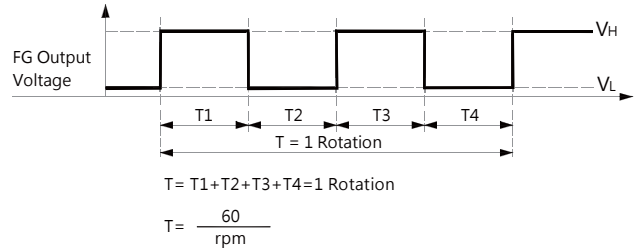
*All model could be customized. Please contact with Sunon Sales.

*Specifications are subject to change without notice. Please Visit SUNON website at www.sunon.com for update information.

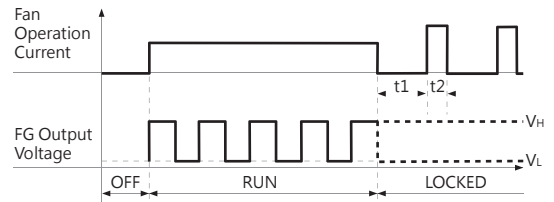
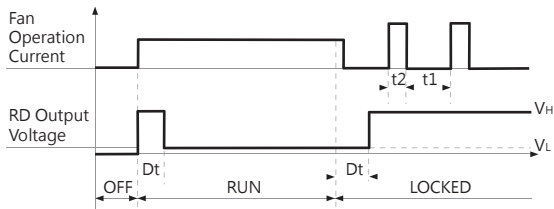
■ FG Signal



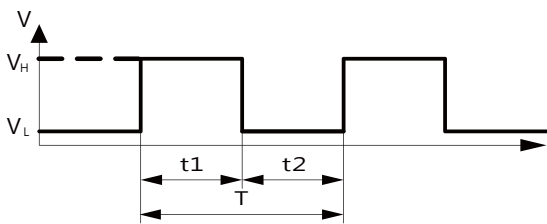
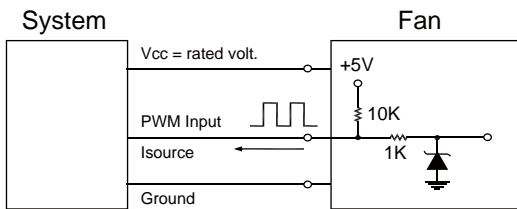
[FG Signal]



[RD Signal]



■ PWM Input Signal



1. Period : $T = \frac{1}{f_{PWM}} = t1 + t2(\text{sec})$

2. Duty Cycle (D.C.) : $\frac{t1}{t1+t2} * 100 = \frac{t1}{T} * 100(\%)$

VH=2.8~5.5V

VL=0~0.8V

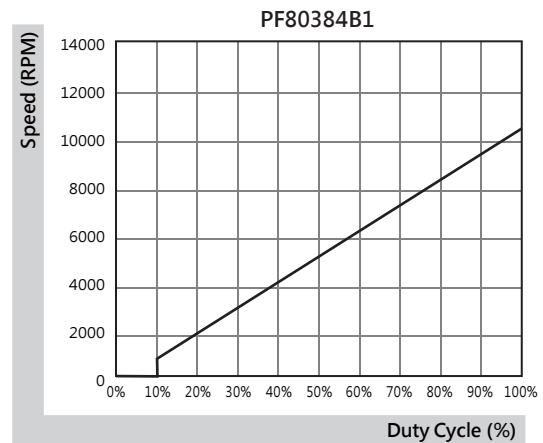
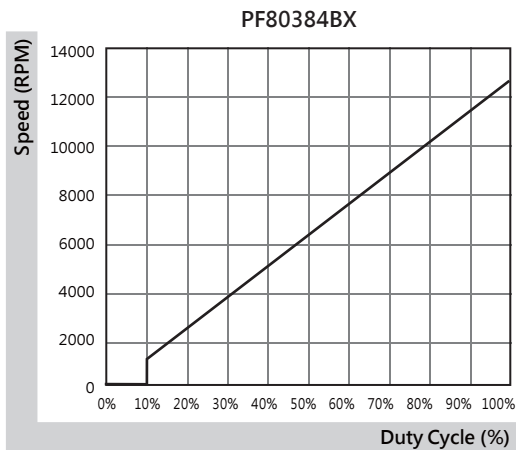
PWM FREQUENCY: 25KHZ

Isource=0.5mA at PWM Input Voltage 0V

The speed is default to be maximum if PWM input pin is unconnected.

Min. start up duty cycle is 10%.

■ PWM Curve



*All model could be customized. Please contact with Sunon Sales.

*Specifications are subject to change without notice. Please Visit SUNON website at www.sunon.com for update information.

80x80x80 mm

122.0~151.5 CFM



Specifications

Model	Bearing	Rating Voltage	Power Current	Power Consumption	Speed in / out	Air Flow	Static Pressure	Noise	Weight	Curve
	2BALL Sleeve	(VDC)	(mA)	(WATTS)	(RPM)	(CFM)	(Inch-H ₂ O)	(dB(A))	(g)	
PF80801BX-0000-A9H	☉	12	6800	81.60	15600/14100	151.5	5.44	80.4	464.0	1
PF80801B1-0000-A9H	☉	12	3500	42.00	12600/11300	122.0	3.66	75.1	464.0	2

Function

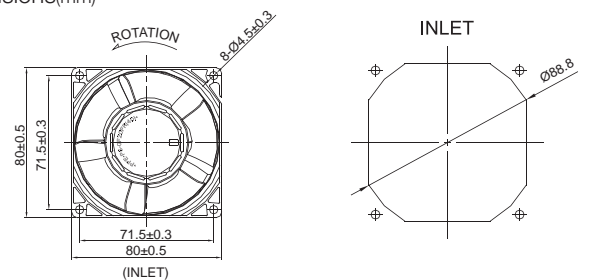
PF80801BX / 1

A9H: AutoRestart

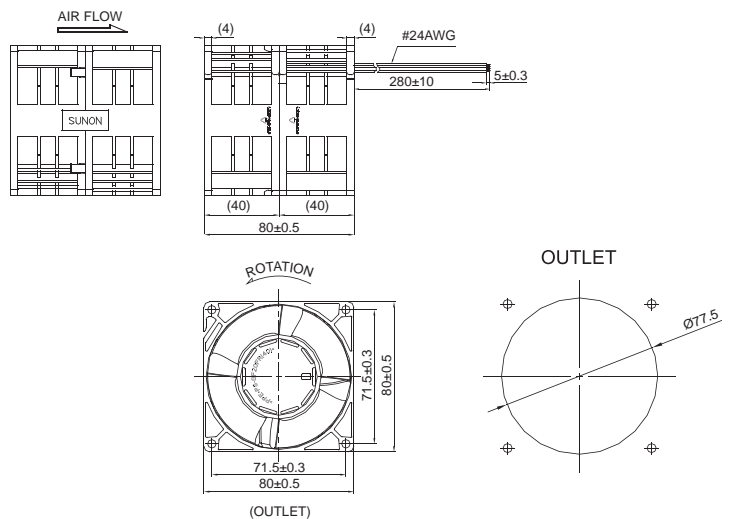
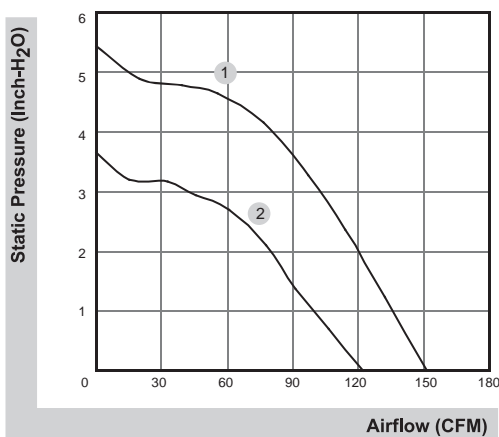
G9H: AutoRestart and F type

S9H: AutoRestart , F type and PWM

External dimensions(mm)



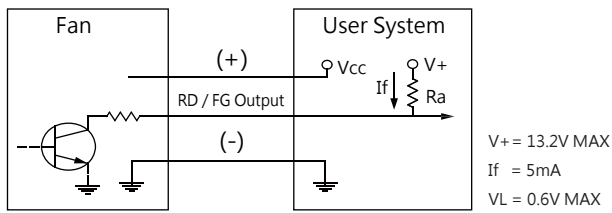
Air Flow-Static Pressure Characteristics



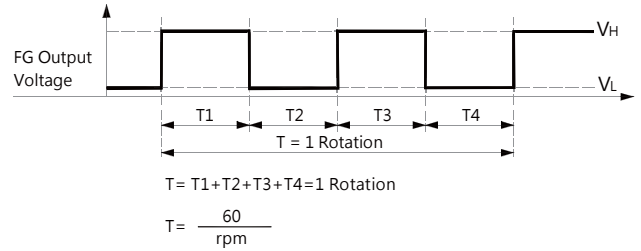
*All model could be customized. Please contact with Sunon Sales.

*Specifications are subject to change without notice. Please Visit SUNON website at www.sunon.com for update information.

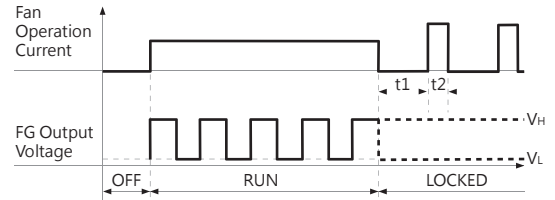
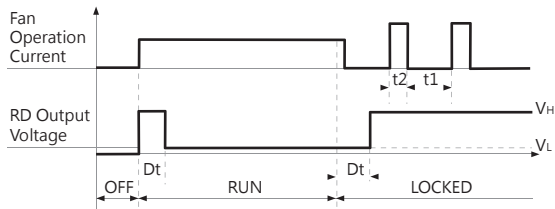
■ FG Signal



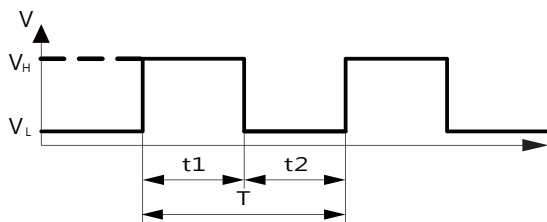
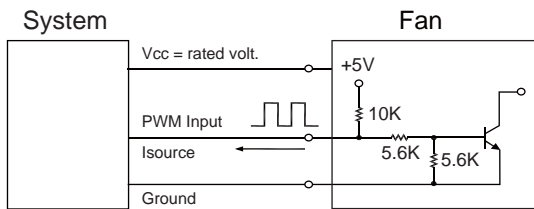
[FG Signal]



[RD Signal]



■ PWM Input Signal



1. Period : $T = \frac{1}{f_{PWM}} = t1 + t2(\text{sec})$

2. Duty Cycle (D.C.) : $\frac{t1}{t1+t2} * 100 = \frac{t1}{T} * 100(\%)$

VH=2.3~5.5V

VL=0~0.8V

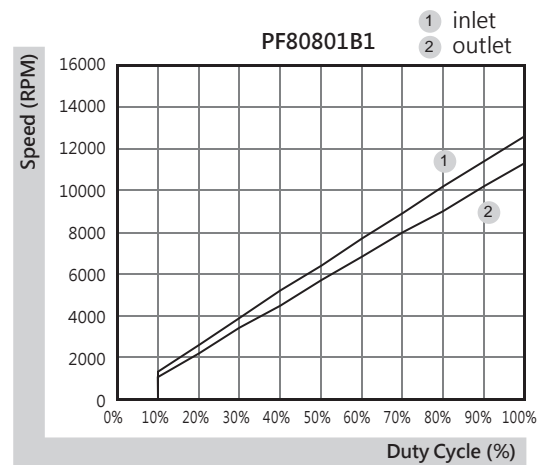
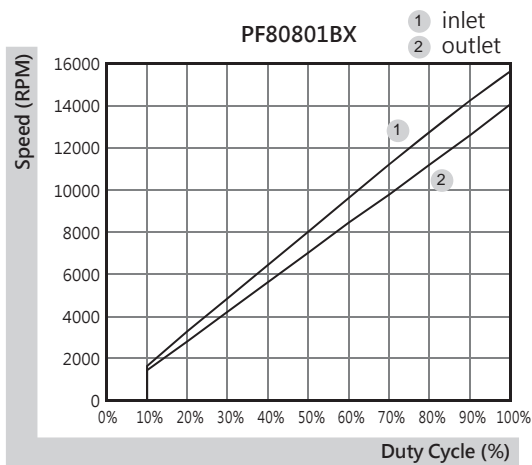
PWM FREQUENCY: 25KHZ

Isource=0.5mA at PWM Input Voltage 0V

The speed is default to be maximum if PWM input pin is unconnected.

Min. start up duty cycle is 10%.

■ PWM Curve

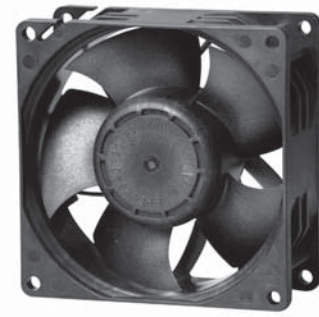


*All model could be customized. Please contact with Sunon Sales.

*Specifications are subject to change without notice. Please Visit SUNON website at www.sunon.com for update information.

92x92x38 mm

138.1~182.4 CFM



■ Specifications

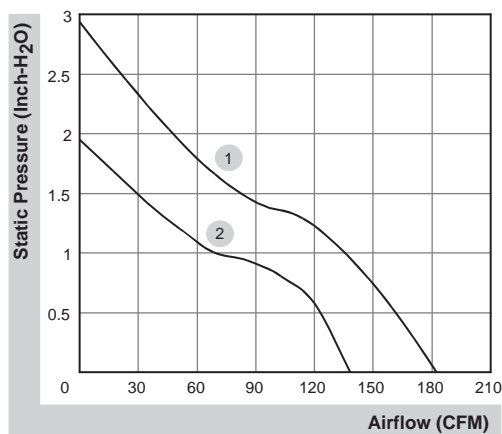
Model	Bearing	Rating Voltage (VDC)	Power Current (mA)	Power Consumption (WATTS)	Speed (RPM)	Air Flow (CFM)	Static Pressure (Inch-H ₂ O)	Noise (dB(A))	Weight (g)	Curve
PF92381BX-0000-A99	2BALL Sleeve	12	4000	48.00	13000	182.4	2.94	72.1	210.0	1
PF92381B1-0000-A99	2BALL Sleeve	12	1700	20.40	9800	138.1	1.95	63.7	210.0	2

■ Function

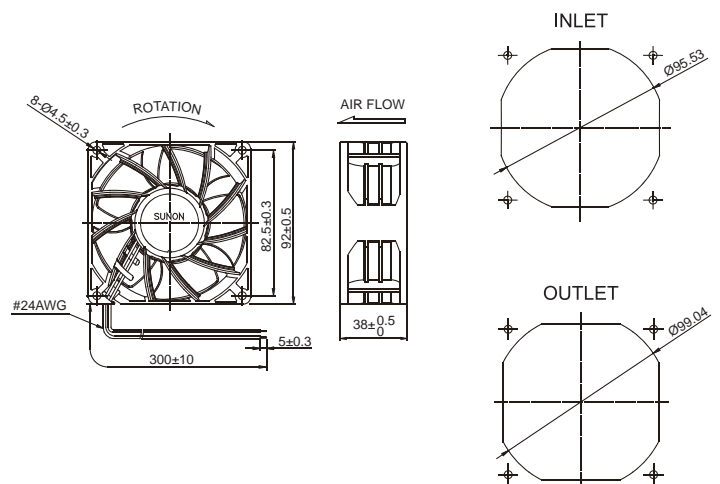
PF92381BX / 1

- A99: AutoRestart
- F99: AutoRestart and R type
- G99: AutoRestart and F type
- H99: AutoRestart and PWM
- Q99: AutoRestart , R type and PWM
- S99: AutoRestart , F type and PWM

■ Air Flow-Static Pressure Characteristics



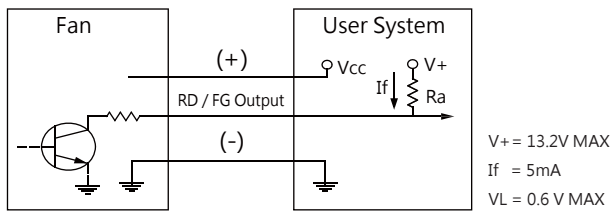
■ External dimensions(mm)



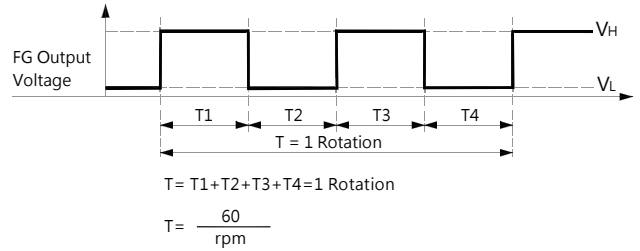
*All model could be customized. Please contact with Sunon Sales.

*Specifications are subject to change without notice. Please Visit SUNON website at www.sunon.com for update information.

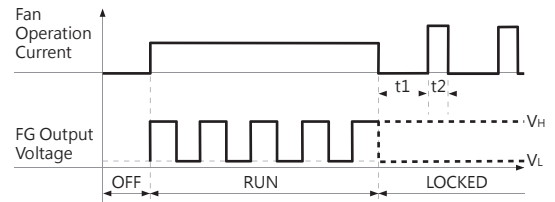
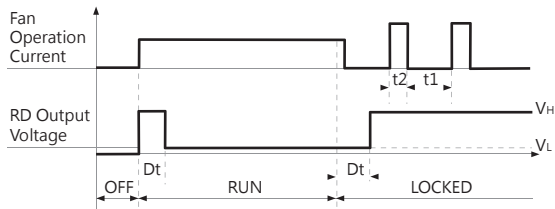
■ FG Signal



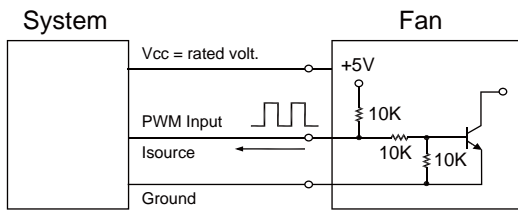
[FG Signal]



[RD Signal]

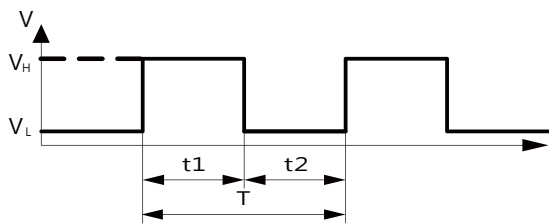


■ PWM Input Signal



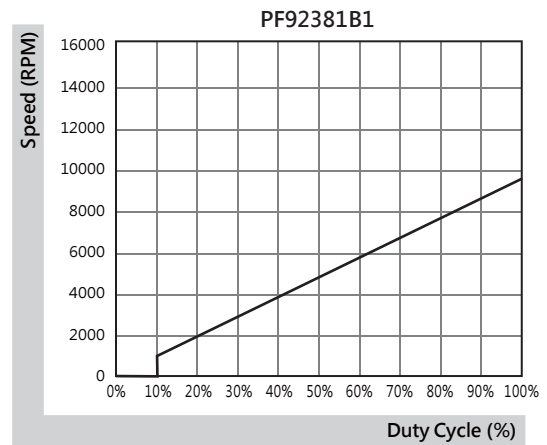
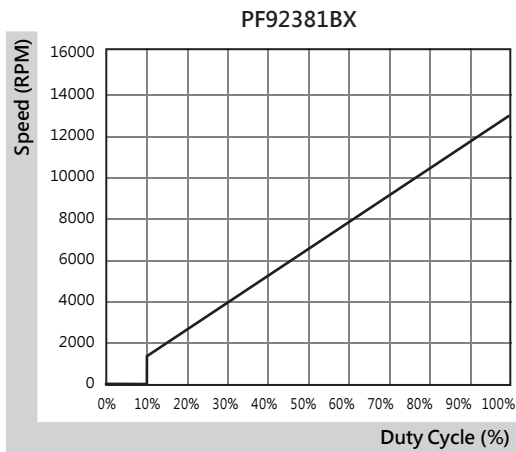
1. Period :
$$T = \frac{1}{f_{PWM}} = t1 + t2(\text{sec})$$

2. Duty Cycle (D.C.) :
$$\frac{t1}{t1+t2} * 100 = \frac{t1}{T} * 100(\%)$$



VH=2.3~5.5V
 VL=0~0.8V
 PWM FREQUENCY: 25KHZ
 Isource=0.5mA at PWM Input Voltage 0V
 The speed is default to be maximum if PWM input pin is unconnected.
 Min. start up duty cycle is 10%.

■ PWM Curve



*All model could be customized. Please contact with Sunon Sales.
 *Specifications are subject to change without notice. Please Visit SUNON website at www.sunon.com for update information.

140x140x38 mm

238.5~297.9 CFM



■ Specifications

Model	Bearing	Rating Voltage	Power Current	Power Consumption	Speed	Air Flow	Static Pressure	Noise	Weight	Curve
	2BALL Sleeve	(VDC)	(mA)	(WATTS)	(RPM)	(CFM)	(Inch-H ₂ O)	(dB(A))	(g)	
PFE0381BX-0000-A99	☉	12	3300	39.60	6800	297.9	2.05	68.3	472.0	1
PFE0381B1-0000-A99	☉	12	1720	20.64	5500	238.5	1.20	62.0	472.0	2

■ Function

PFE0381BX / 1

A99: AutoRestart

F99: AutoRestart and R type

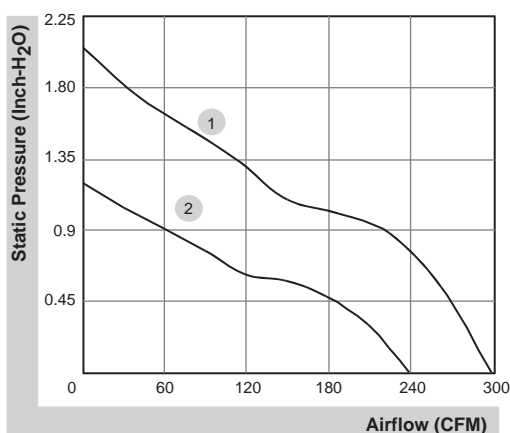
G99: AutoRestart and F type

H99: AutoRestart and PWM

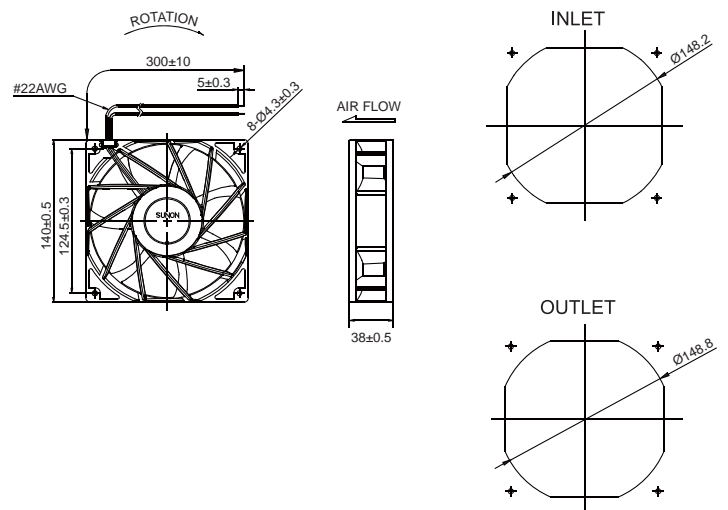
Q99: AutoRestart , R type and PWM

S99: AutoRestart , F type and PWM

■ Air Flow-Static Pressure Characteristics



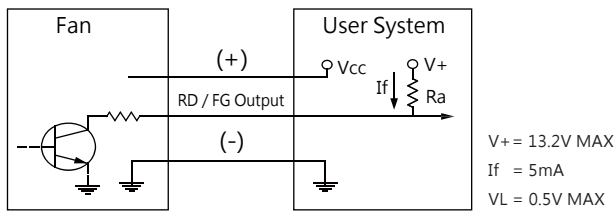
■ External dimensions(mm)



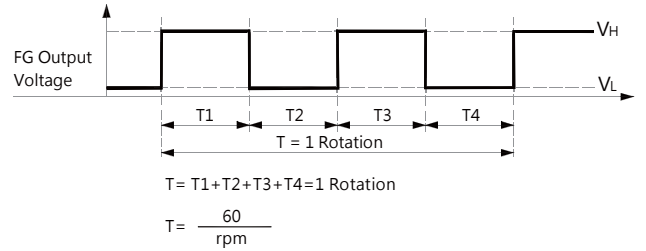
*All model could be customized. Please contact with Sunon Sales.

*Specifications are subject to change without notice. Please Visit SUNON website at www.sunon.com for update information.

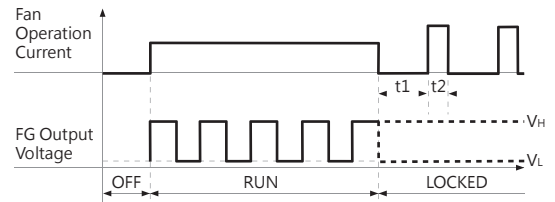
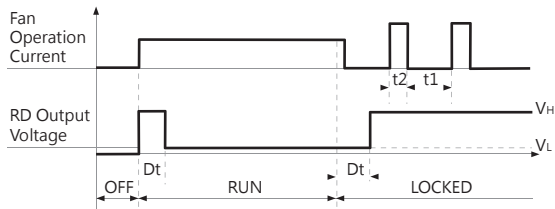
■ FG Signal



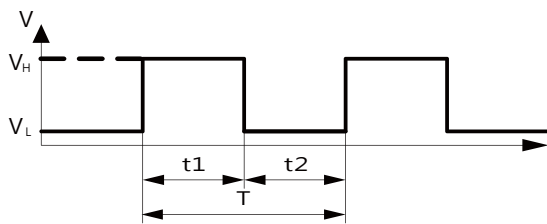
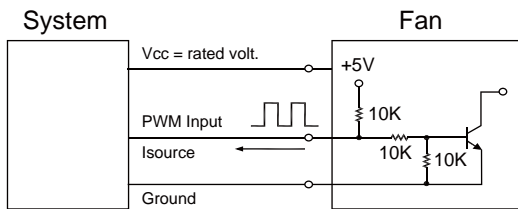
[FG Signal]



[RD Signal]



■ PWM Input Signal



1. Period : $T = \frac{1}{f_{PWM}} = t1 + t2(\text{sec})$

2. Duty Cycle (D.C.) : $\frac{t1}{t1+t2} * 100 = \frac{t1}{T} * 100(\%)$

VH=2.3~5.5V

VL=0~0.8V

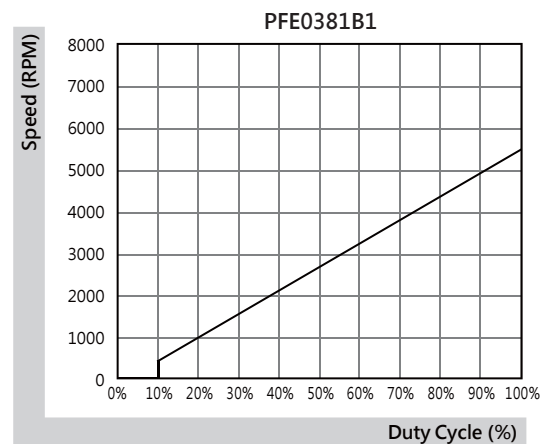
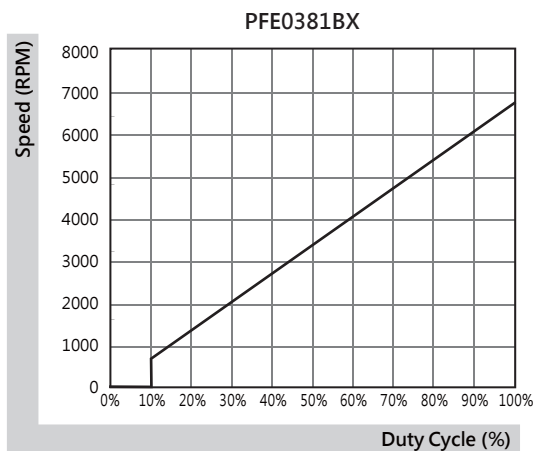
PWM FREQUENCY: 25KHZ

Isource=0.5mA at PWM Input Voltage 0V

The speed is default to be maximum if PWM input pin is unconnected.

Min. start up duty cycle is 10%.

■ PWM Curve



*All model could be customized. Please contact with Sunon Sales.

*Specifications are subject to change without notice. Please Visit SUNON website at www.sunon.com for update information.

140x140x38 mm

282.6 CFM



■ Specifications

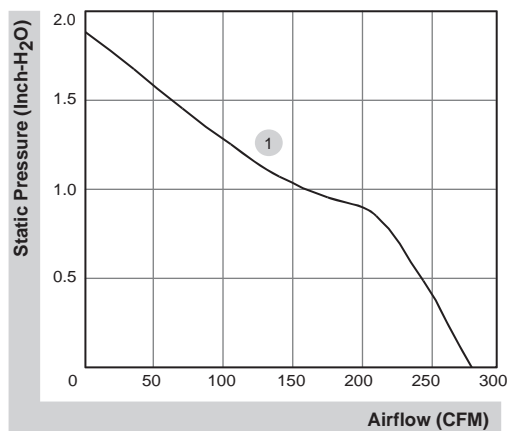
Model	Bearing	Rating Voltage (VDC)	Power Current (mA)	Power Consumption (WATTS)	Speed (RPM)	Air Flow (CFM)	Static Pressure (inch-H ₂ O)	Noise (dB(A))	Weight (g)	Curve
PFE0384BX-0000-A99	2BALL Sleeve	48	740	35.52	6600	282.6	1.88	65.9	560.0	1

■ Function

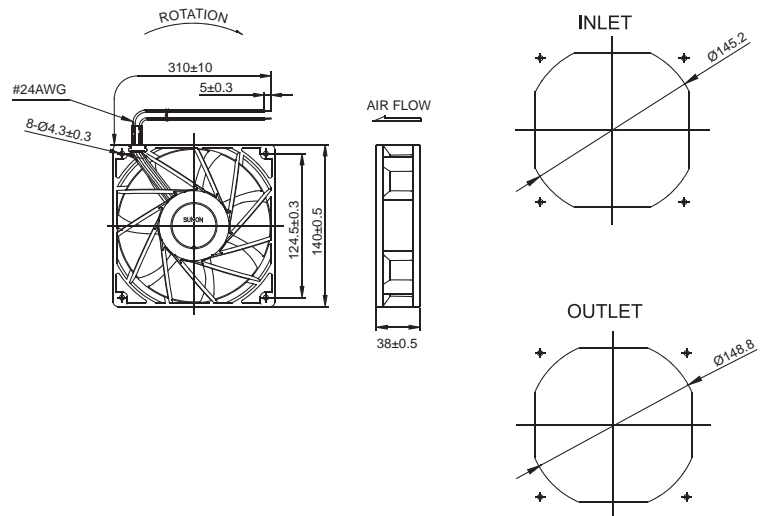
PFE0384BX

- A99: AutoRestart
- F99: AutoRestart and R type
- G99: AutoRestart and F type
- H99: AutoRestart and PWM
- Q99: AutoRestart , R type and PWM
- S99: AutoRestart , F type and PWM

■ Air Flow-Static Pressure Characteristics



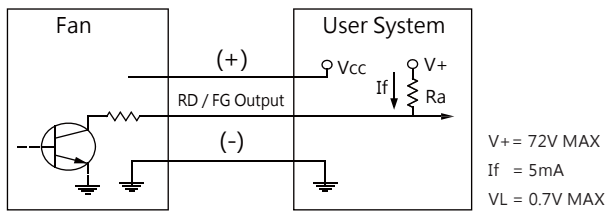
■ External dimensions(mm)



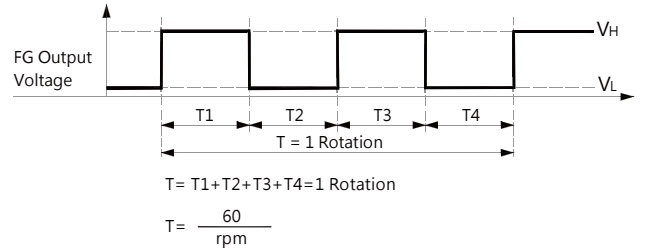
*All model could be customized. Please contact with Sunon Sales.

*Specifications are subject to change without notice. Please Visit SUNON website at www.sunon.com for update information.

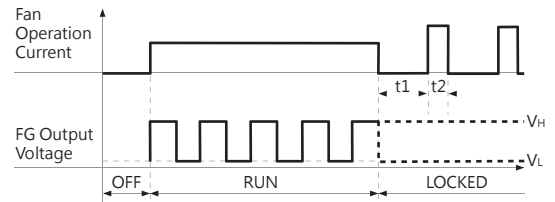
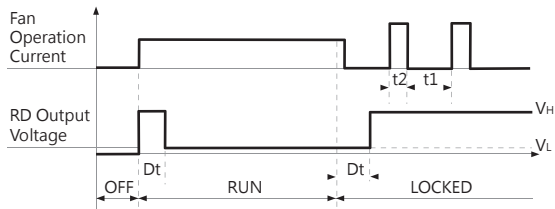
■ FG Signal



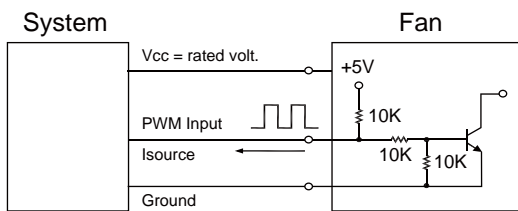
[FG Signal]



[RD Signal]

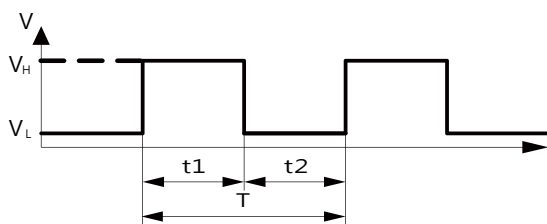


■ PWM Input Signal



1. Period : $T = \frac{1}{f_{PWM}} = t1 + t2(\text{sec})$

2. Duty Cycle (D.C.) : $\frac{t1}{t1+t2} * 100 = \frac{t1}{T} * 100(\%)$



VH=2.3~5.5V

VL=0~0.8V

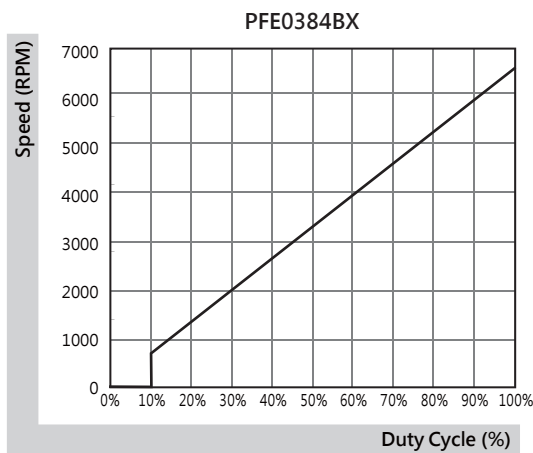
PWM FREQUENCY: 25KHZ

Isource=0.5mA at PWM Input Voltage 0V

The speed is default to be maximum if PWM input pin is unconnected.

Min. start up duty cycle is 10%.

■ PWM Curve



*All model could be customized. Please contact with Sunon Sales.

*Specifications are subject to change without notice. Please Visit SUNON website at www.sunon.com for update information.

140x140x51 mm

250.3 CFM



■ Specifications

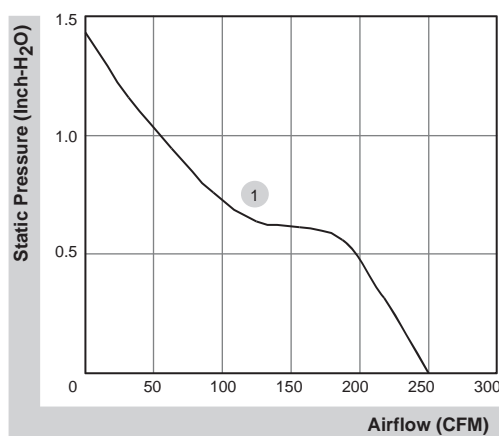
Model	Bearing	Rating Voltage (VDC)	Power Current (mA)	Power Consumption (WATTS)	Speed (RPM)	Air Flow (CFM)	Static Pressure (inch-H ₂ O)	Noise (dB(A))	Weight (g)	Curve
PFE0514B1-0000-A99	2BALL Sleeve	48	470	22.56	5000	250.3	1.43	61.4	635.0	1

■ Function

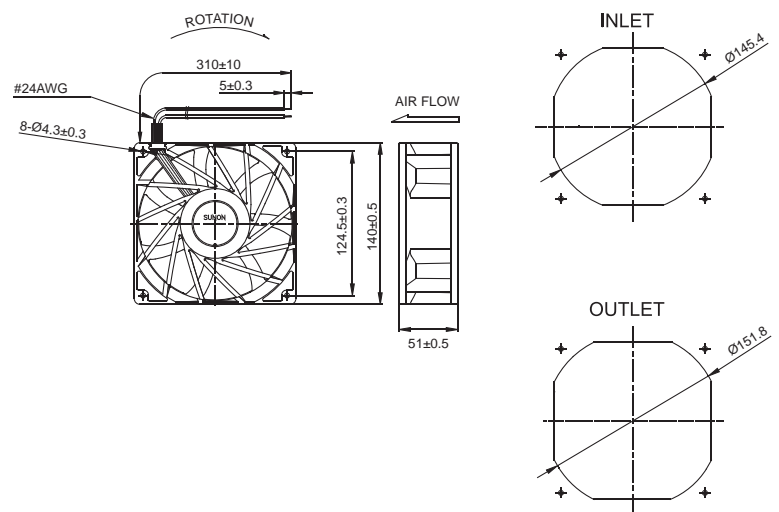
PFE0514B1

- A99: AutoRestart
- F99: AutoRestart and R type
- G99: AutoRestart and F type
- H99: AutoRestart and PWM
- Q99: AutoRestart , R type and PWM
- S99: AutoRestart , F type and PWM

■ Air Flow-Static Pressure Characteristics



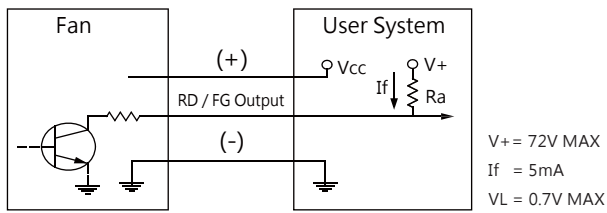
■ External dimensions(mm)



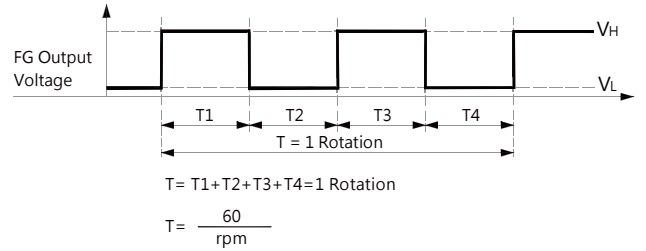
*All model could be customized. Please contact with Sunon Sales.

*Specifications are subject to change without notice. Please Visit SUNON website at www.sunon.com for update information.

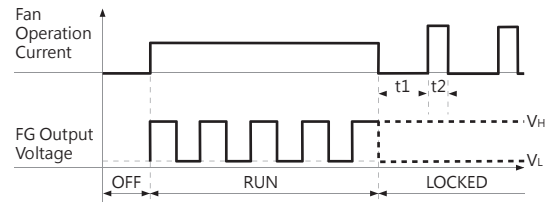
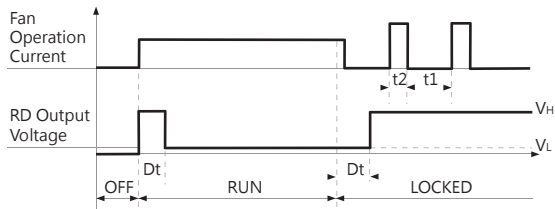
■ FG Signal



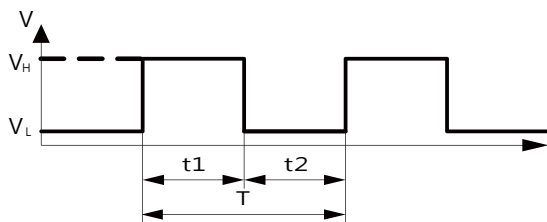
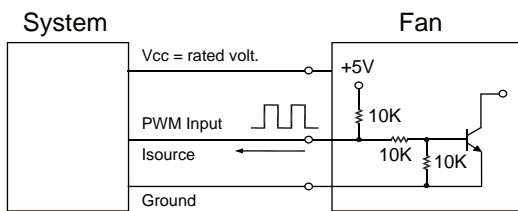
[FG Signal]



[RD Signal]



■ PWM Input Signal



1. Period :
$$T = \frac{1}{f_{PWM}} = t1 + t2(\text{sec})$$

2. Duty Cycle (D.C.) :
$$\frac{t1}{t1+t2} * 100 = \frac{t1}{T} * 100(\%)$$

VH=2.3~5.5V

VL=0~0.8V

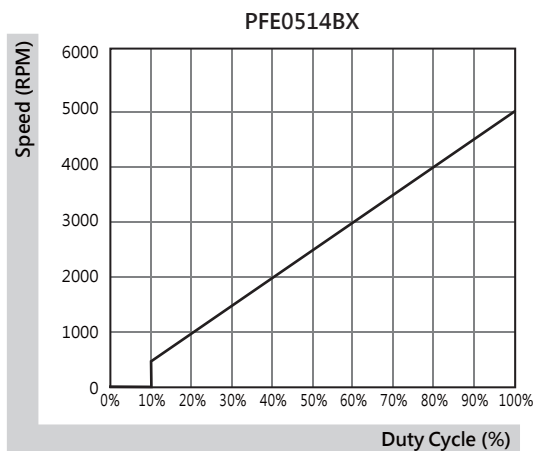
PWM FREQUENCY: 25KHZ

Isource=0.5mA at PWM Input Voltage 0V

The speed is default to be maximum if PWM input pin is unconnected.

Min. start up duty cycle is 10%.

■ PWM Curve



*All model could be customized. Please contact with Sunon Sales.

*Specifications are subject to change without notice. Please Visit SUNON website at www.sunon.com for update information.

97x95x33 mm

44.2~54.7 CFM



■ Specifications

Model	Bearing	Rating Voltage	Power Current	Power Consumption	Speed	Air Flow	Static Pressure	Noise	Weight	Curve
	2BALL Sleeve	(VDC)	(mA)	(WATTS)	(RPM)	(CFM)	(Inch-H ₂ O)	(dB(A))	(g)	
PF97331BX-B000-A99	☉	12	3500	42.00	6800	54.7	5.22	63.2	184.0	1
PF97331B1-B000-A99	☉	12	1600	19.20	5400	44.2	3.39	58.0	184.0	2

■ Function

PF97331BX / 1

A99: AutoRestart

F99: AutoRestart and R type

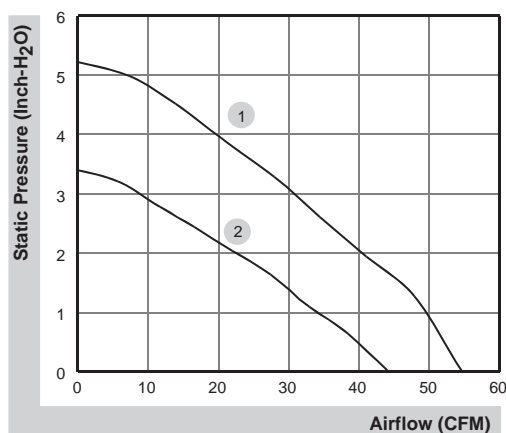
G99: AutoRestart and F type

H99: AutoRestart and PWM

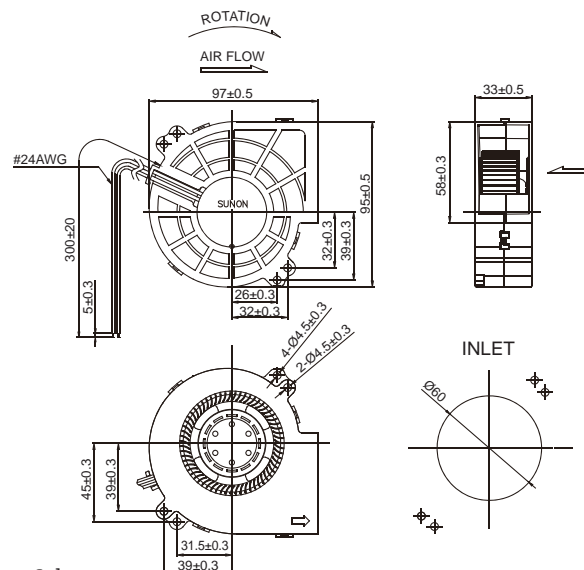
Q99: AutoRestart , R type and PWM

S99: AutoRestart , F type and PWM

■ Air Flow-Static Pressure Characteristics



■ External dimensions(mm)

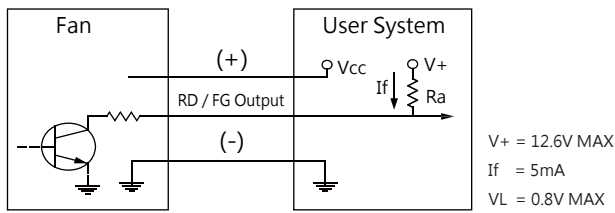


*All model could be customized. Please contact with Sunon Sales.

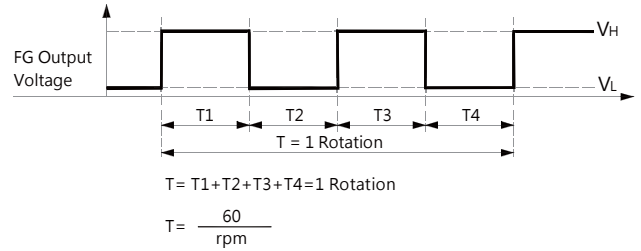
*Specifications are subject to change without notice. Please Visit SUNON website at www.sunon.com for update information.

2013/09/30 (198-A)

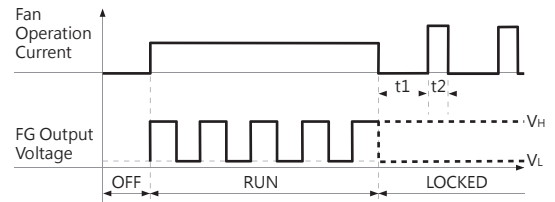
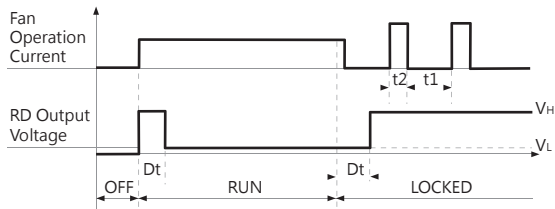
■ FG Signal



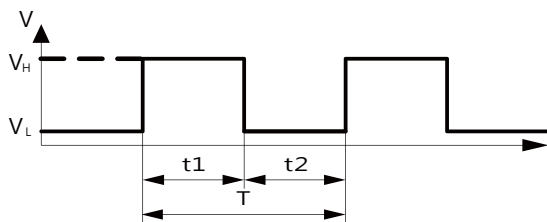
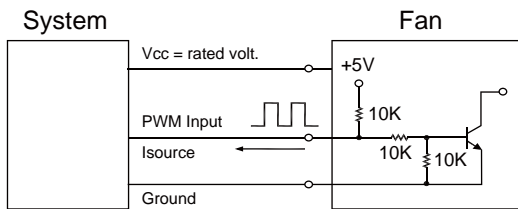
[FG Signal]



[RD Signal]



■ PWM Input Signal



1. Period : $T = \frac{1}{f_{PWM}} = t1 + t2(\text{sec})$

2. Duty Cycle (D.C.) : $\frac{t1}{t1+t2} * 100 = \frac{t1}{T} * 100(\%)$

VH=2.3~5.5V

VL=0~0.8V

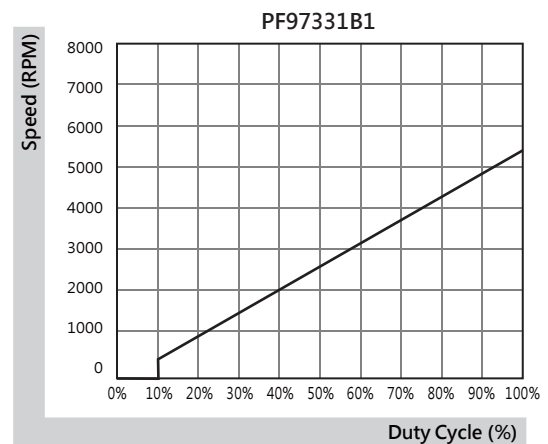
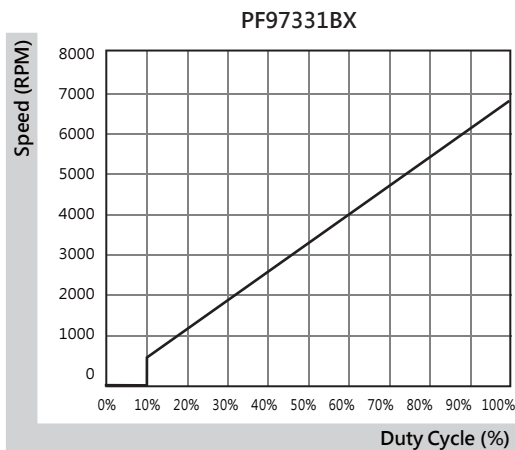
PWM FREQUENCY: 25KHZ

Isource=0.5mA at PWM Input Voltage 0V

The speed is default to be maximum if PWM input pin is unconnected.

Min. start up duty cycle is 10%.

■ PWM Curve



*All model could be customized. Please contact with Sunon Sales.

*Specifications are subject to change without notice. Please Visit SUNON website at www.sunon.com for update information.

Sunonwealth Electric Machine Industry Co., Ltd. (Headquarters)

TEL : +886-7-8135888

E-mail : sunon@email.sunon.com.tw

Sunon Inc. (U.S.A.)

TEL : +1-714-255-0208

E-mail : info@sunon.com

Sunon SAS (Europe)

TEL : +33-1-46154515

E-mail : info@sunoneurope.com

Sunon China (Shen Zhen Office)

TEL : +86-755-26880688

E-mail : sunon@email.sunon.com.tw

Sunon Taipei Office (Taipei)

TEL : +886-2-27992383